

1 Q. **Volume II (1st Revision), Exhibit 1: Provincial Electrical System**

2 Please update Schedules I, II, and IV to show the electrical system configurations,
3 and applicable plant assignments, that will be in place for the 2019 test year. The
4 update should include, for example, the Muskrat Falls to Happy Valley
5 Interconnection project proposed in Hydro’s 2018 Capital Budget Application.

6
7

8 A. Please refer to NP-NLH-121, Attachment 1 and Attachment 2, which reflect the
9 Muskrat Falls to Happy Valley Interconnection project proposed in Hydro’s 2018
10 Capital Budget Application. These schedules and the original version of Schedule II
11 indicate the electrical system configurations and applicable plant assignments that
12 will be in place for the 2019 Test Year.

LEGEND

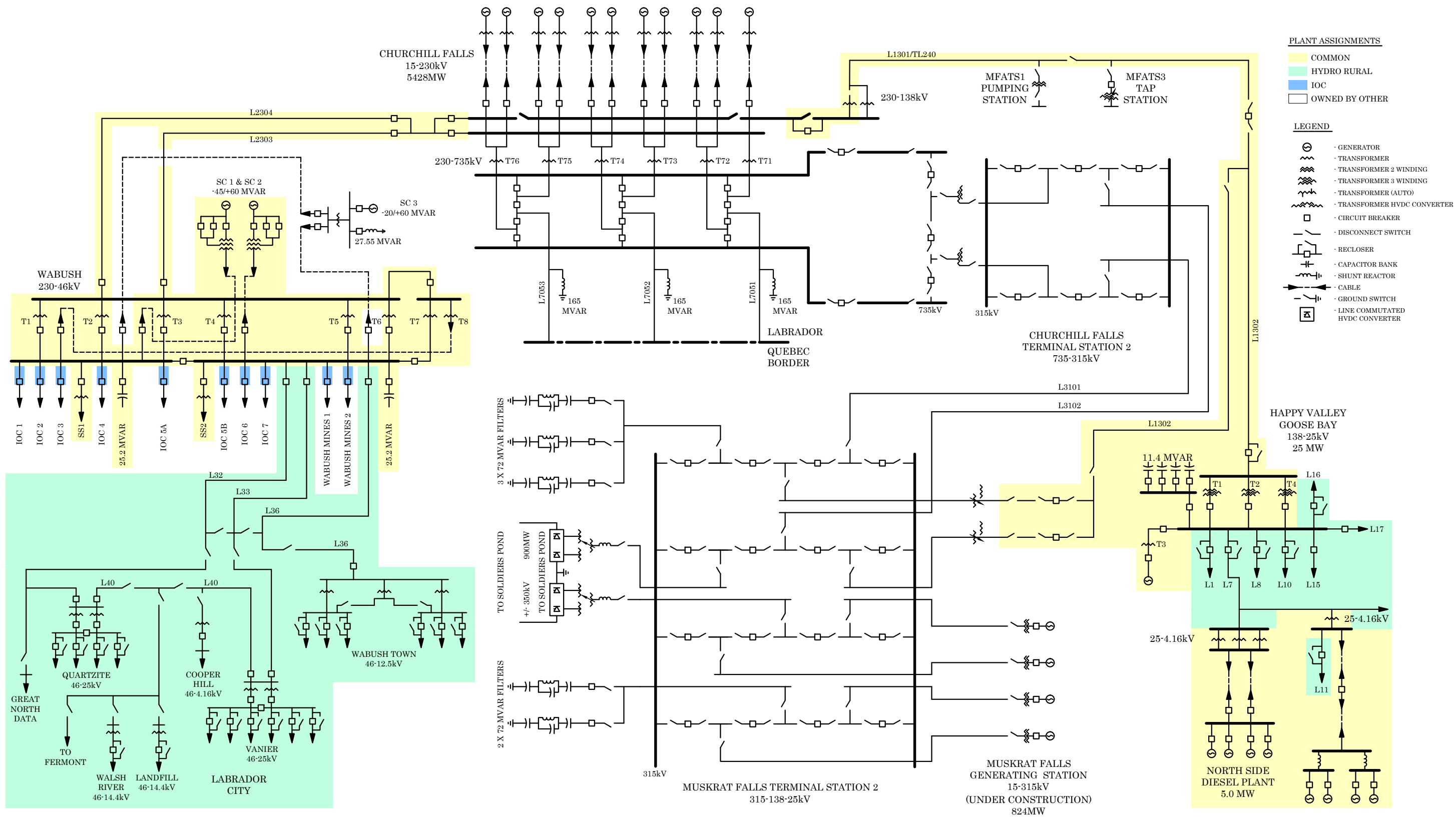
- | | | | |
|--|--------------------------------------|--|-----------------------------|
| | 735 kV | | FREQ. CONVERTOR |
| | 315 kV | | NF. POWER |
| | 230 kV | | CORNER BROOK PULP AND PAPER |
| | 138 kV | | ALGONQUIN POWER |
| | 69 kV | | MUSHUAU 1st NATION |
| | LOW VOLTAGE | | WIND GENERATION |
| | 138kV CUSTOMER OWNED | | OPERATED BY NALCOR |
| | 69kV CUSTOMER OWNED | | GAS TURBINE |
| | HYDRO PLANT | | DIESEL PLANT |
| | THERMAL PLANT | | |
| | TERMINAL STATION | | |
| | TERMINAL STATION & CONVERTER STATION | | |

DC LEGEND

- | | |
|--|----------------------|
| | ± 350 / ± 200kV HVdc |
| | SUBMARINE CABLE |
| | ELECTRODE LINE |
| | ELECTRODE STATION |



Provincial Generation and Transmission Grid



- PLANT ASSIGNMENTS**
- COMMON
 - HYDRO RURAL
 - IOC
 - OWNED BY OTHER

- LEGEND**
- GENERATOR
 - TRANSFORMER
 - TRANSFORMER 2 WINDING
 - TRANSFORMER 3 WINDING
 - TRANSFORMER (AUTO)
 - TRANSFORMER HVDC CONVERTER
 - CIRCUIT BREAKER
 - DISCONNECT SWITCH
 - RECLOSER
 - CAPACITOR BANK
 - SHUNT REACTOR
 - CABLE
 - GROUND SWITCH
 - LINE COMMUTATED HVDC CONVERTER

Labrador Interconnected System
2019 Plant Assignment