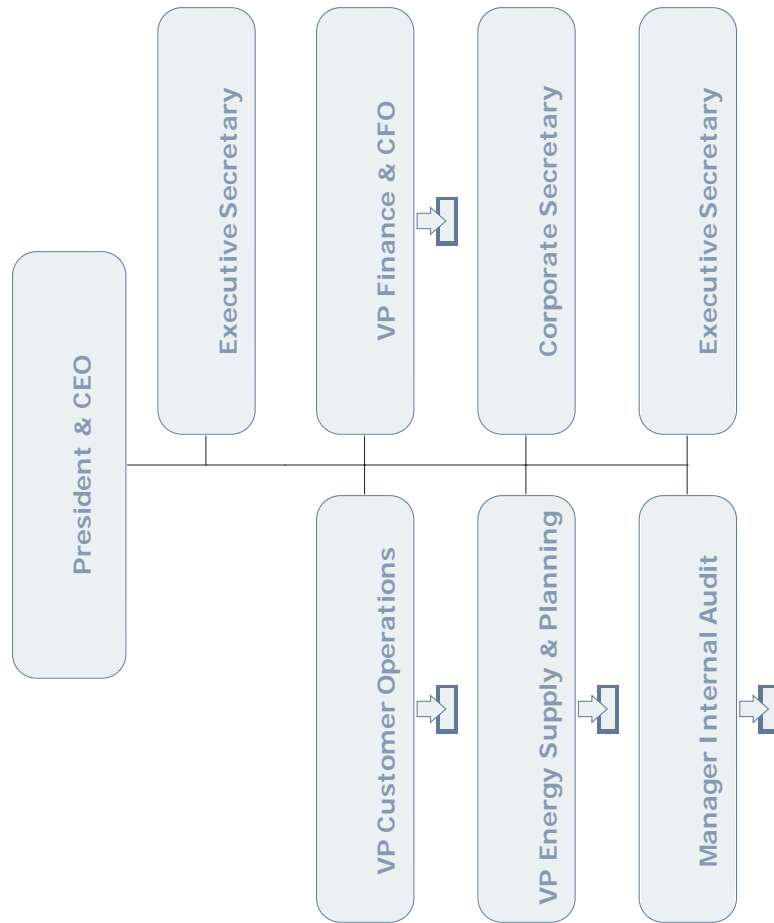


- 1 **Q. Describe any organizational changes that have taken place since the last general rate**  
2 **application in 2016 and provide the most recent organizational chart for**  
3 **Newfoundland Power.**  
4
- 5 A. The following organizational changes have taken place since the *2016/2017 General Rate*  
6 *Application*.  
7
- 8 In 2016, the new role of Chief Operating Officer (“COO”) was created. This included  
9 responsibilities of the former Vice President, Finance and Chief Financial Officer  
10 (“CFO”), as well as responsibility for Human Resources, Customer Relations and  
11 Operations and Engineering. In addition, the responsibility for Corporate  
12 Communications was moved from the President and Chief Executive Officer (“CEO”) to  
13 the Vice President, Regulation and Planning. The Director, Revenue and Supply was  
14 repositioned to include a focus on the transitioning of the Company to a post-Muskrat  
15 Falls power system in the province.  
16
- 17 In 2017, the COO position was eliminated. The responsibility for Human Resources  
18 moved to the CEO. The responsibility for Customer Relations and Energy Conservation  
19 were moved to the Vice President, Customer Operations and Engineering. The CFO  
20 position was re-established.  
21
- 22 In 2018, the responsibility for Regulation and Legal were moved under the CFO role.  
23 The departments of Technology, Planning and Supply, and Engineering were moved  
24 under the new role of Vice President, Energy Supply and Planning. Human Resources  
25 and Corporate Communications were also moved under the Vice President, Customer  
26 Operations. The role of Vice President, Regulation and Planning was eliminated.  
27
- 28 Attachment A contains a copy of Newfoundland Power’s organization chart as of  
29 July 31<sup>st</sup>, 2018.

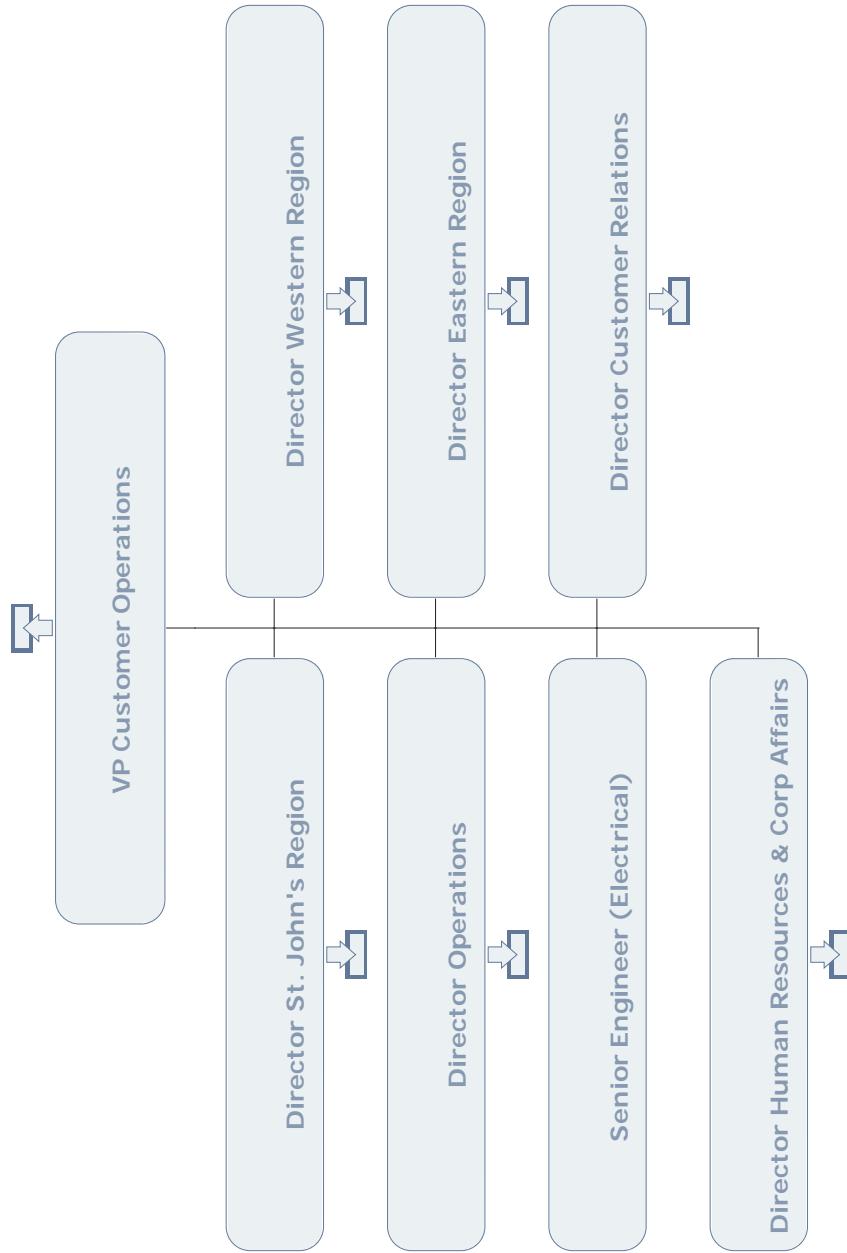
**Newfoundland Power's Organization Chart as of  
July 31<sup>st</sup>, 2018**

# Newfoundland and Power Org Chart

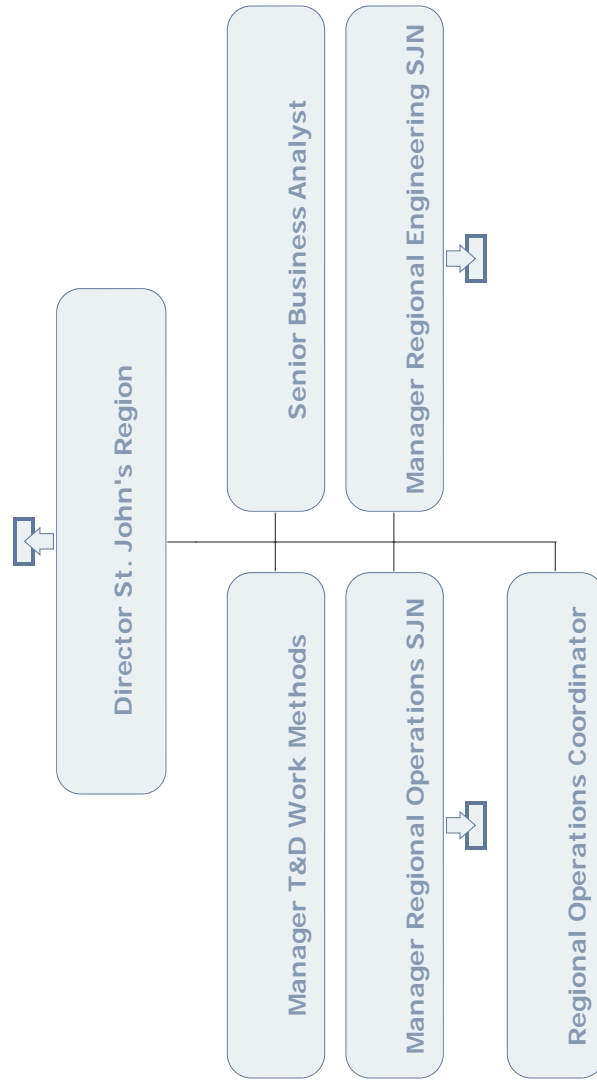
# EXECUTIVE



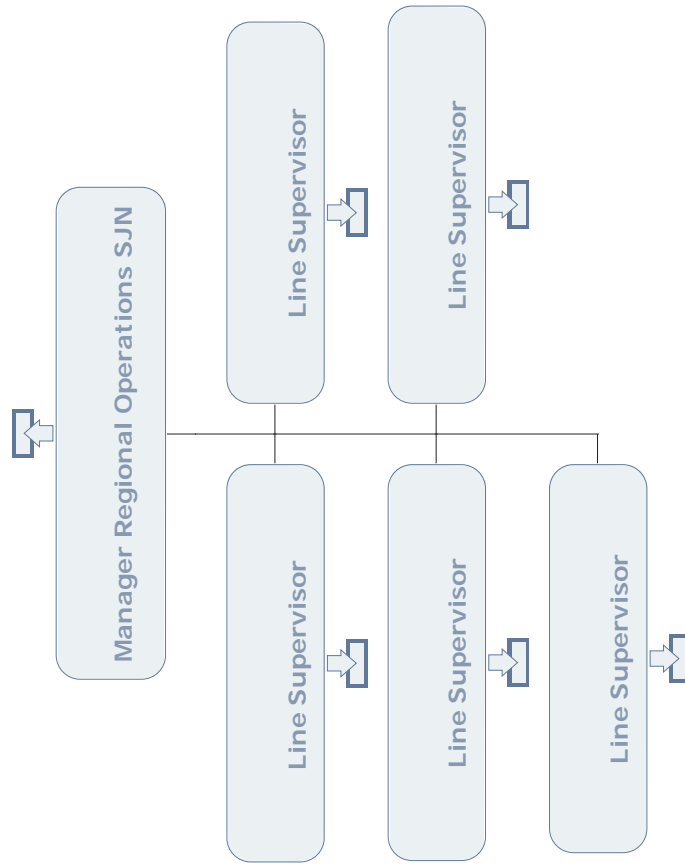
# CUSTOMER OPERATIONS



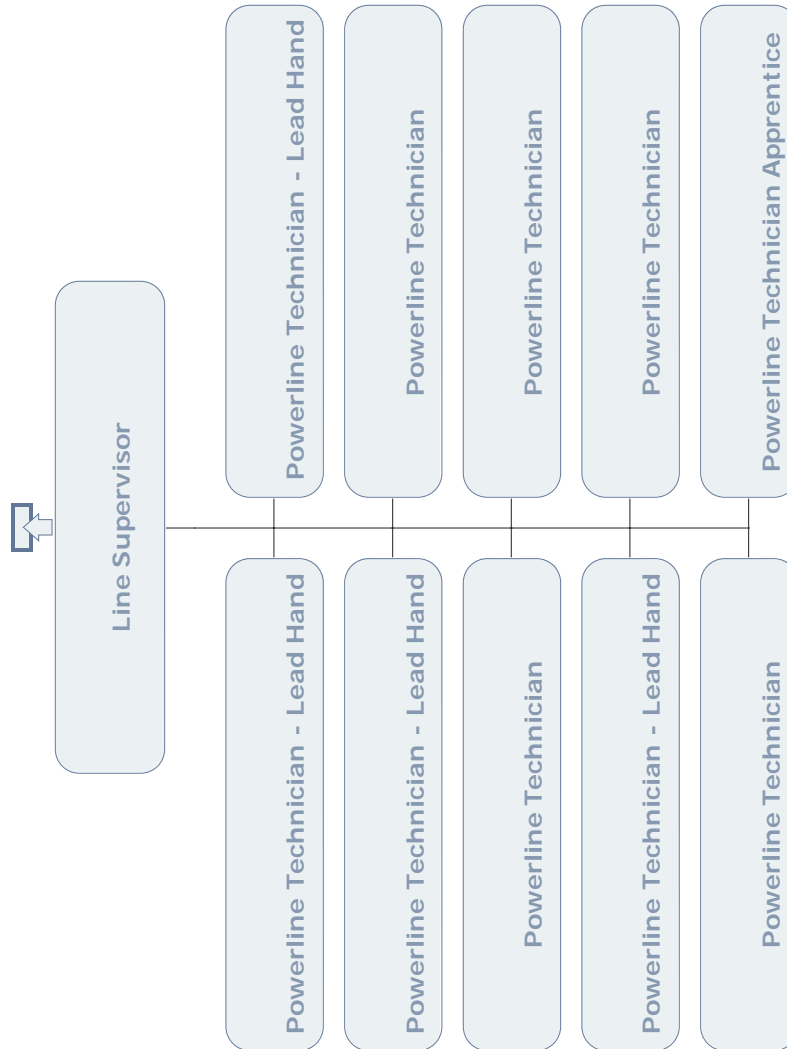
## CUSTOMER OPERATIONS ST. JOHN'S REGIONAL OPERATIONS



# CUSTOMER OPERATIONS ST. JOHN'S REGIONAL ENGINEERING

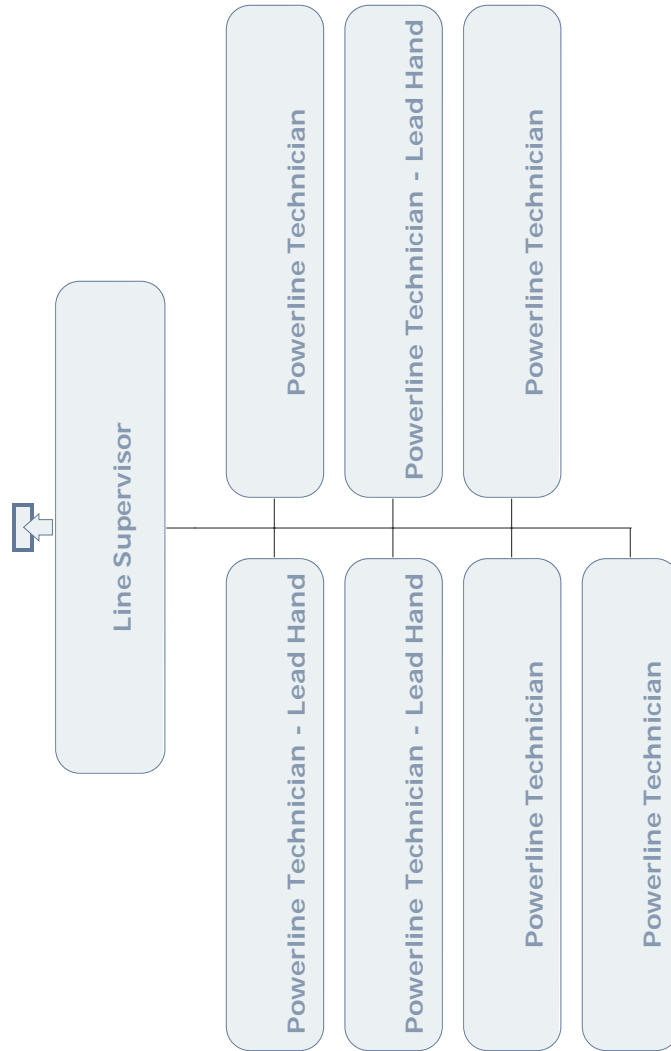


## CUSTOMER OPERATIONS ST. JOHN'S REGIONAL ENGINEERING

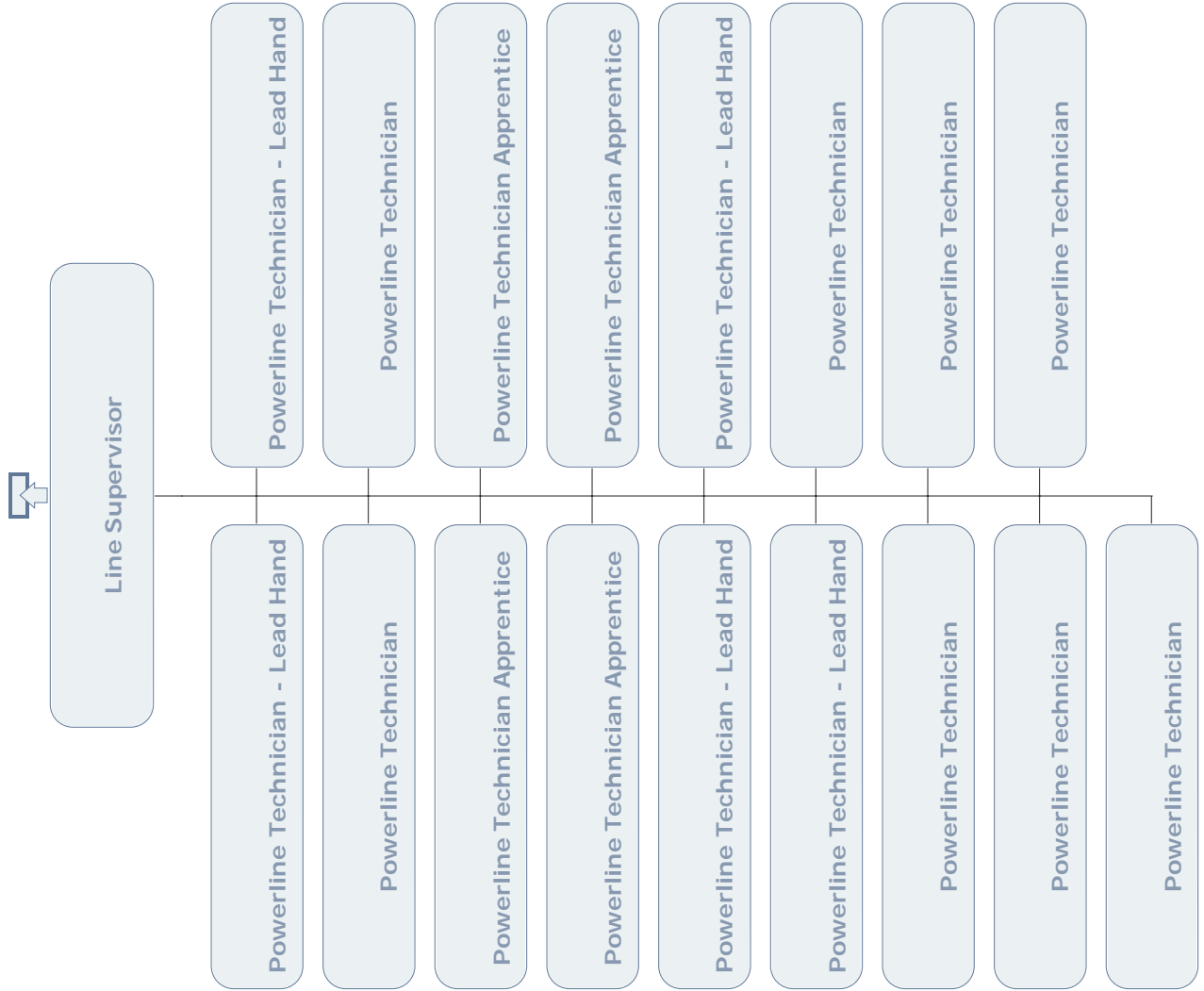




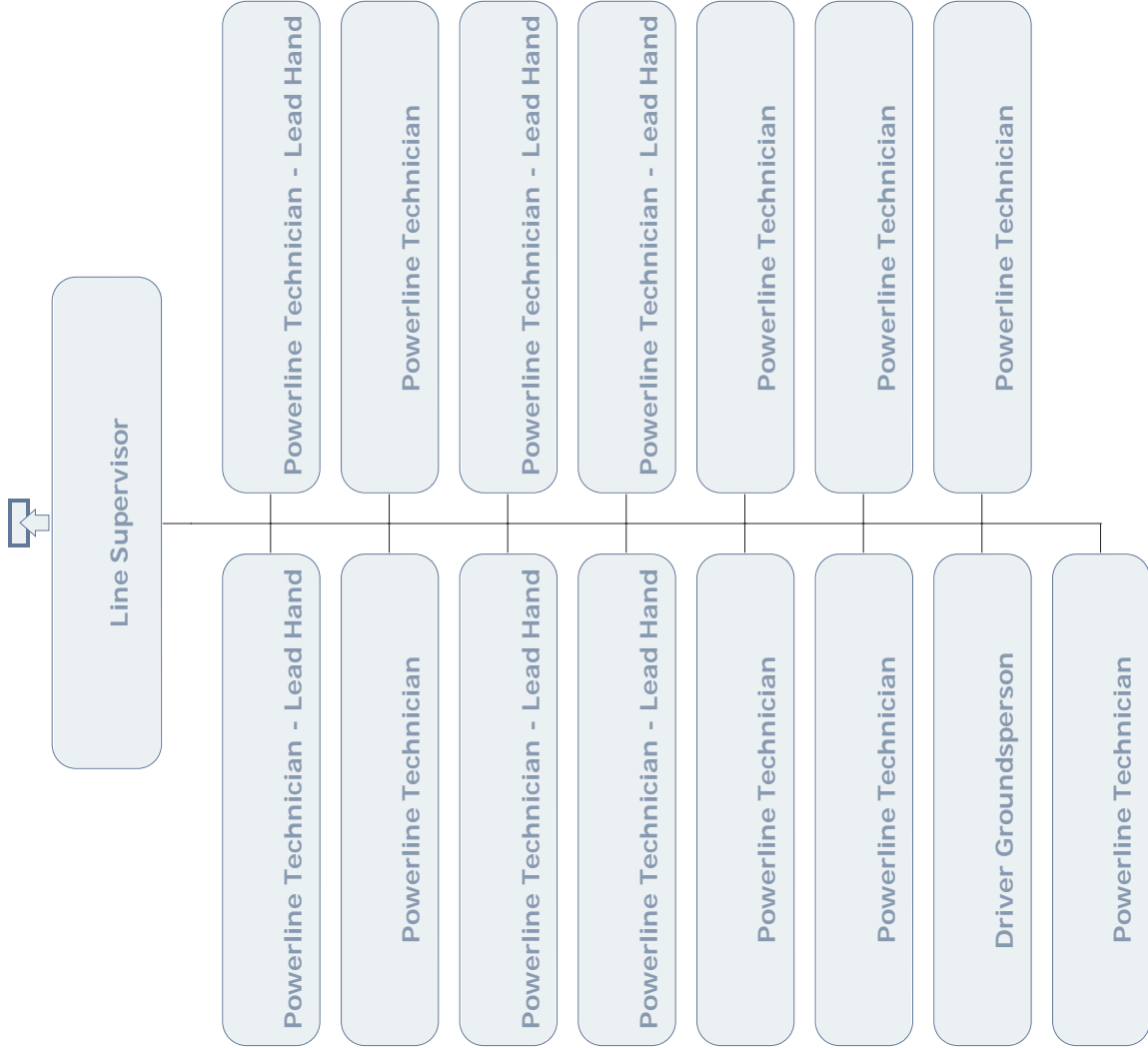
# CUSTOMER OPERATIONS ST. JOHN'S REGIONAL ENGINEERING



# CUSTOMER OPERATIONS ST. JOHN'S REGIONAL ENGINEERING



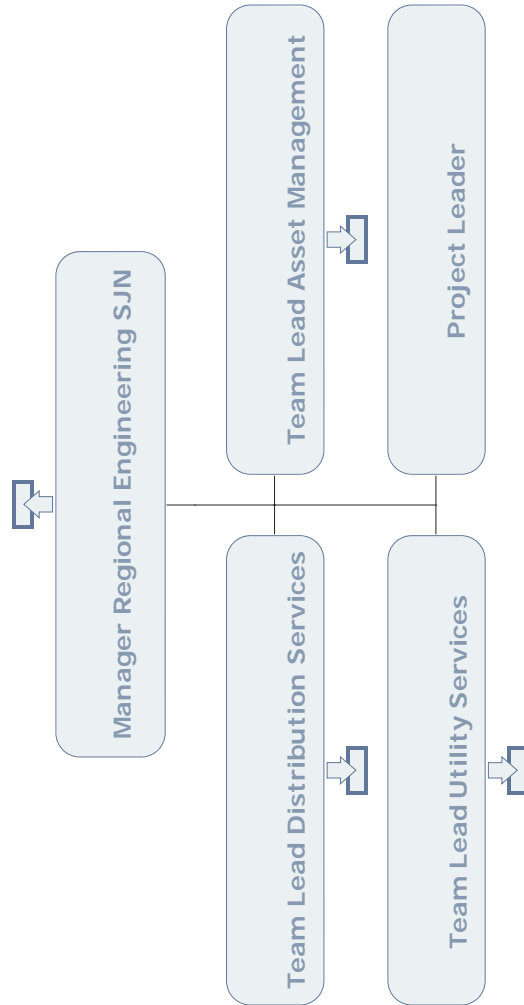
# CUSTOMER OPERATIONS ST. JOHN'S REGIONAL ENGINEERING



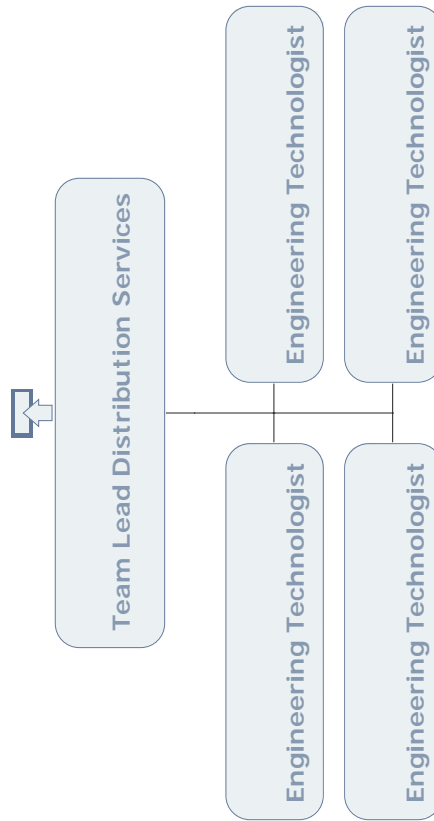
# CUSTOMER OPERATIONS ST. JOHN'S REGIONAL ENGINEERING



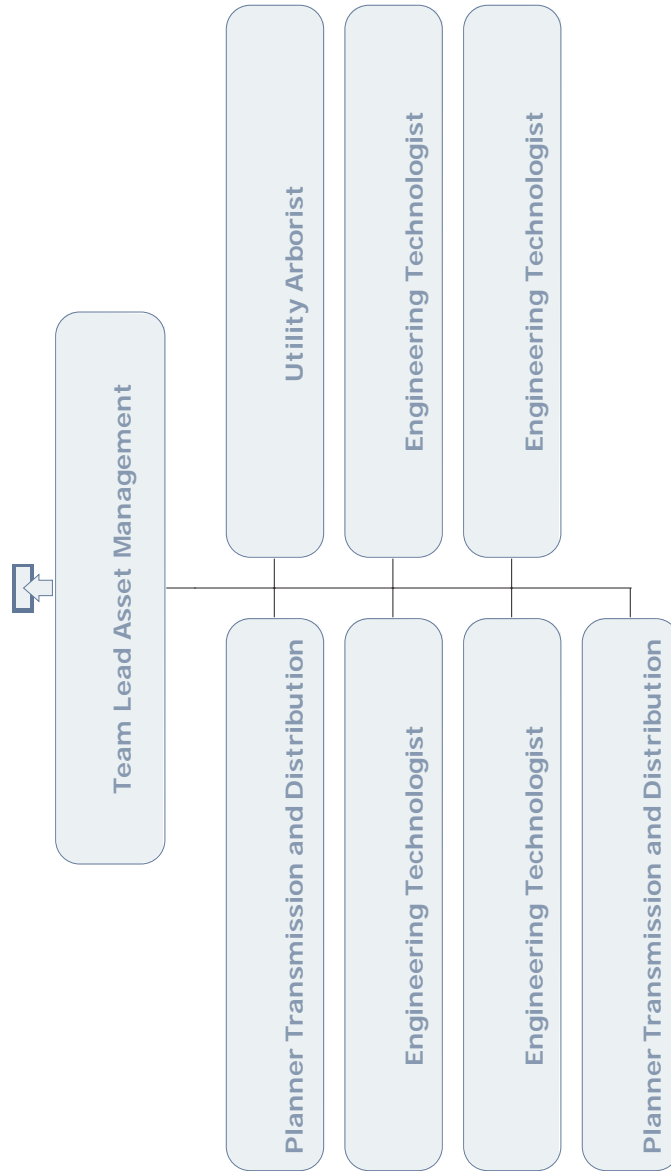
## CUSTOMER OPERATIONS ST. JOHN'S DISTRIBUTION SERVICES



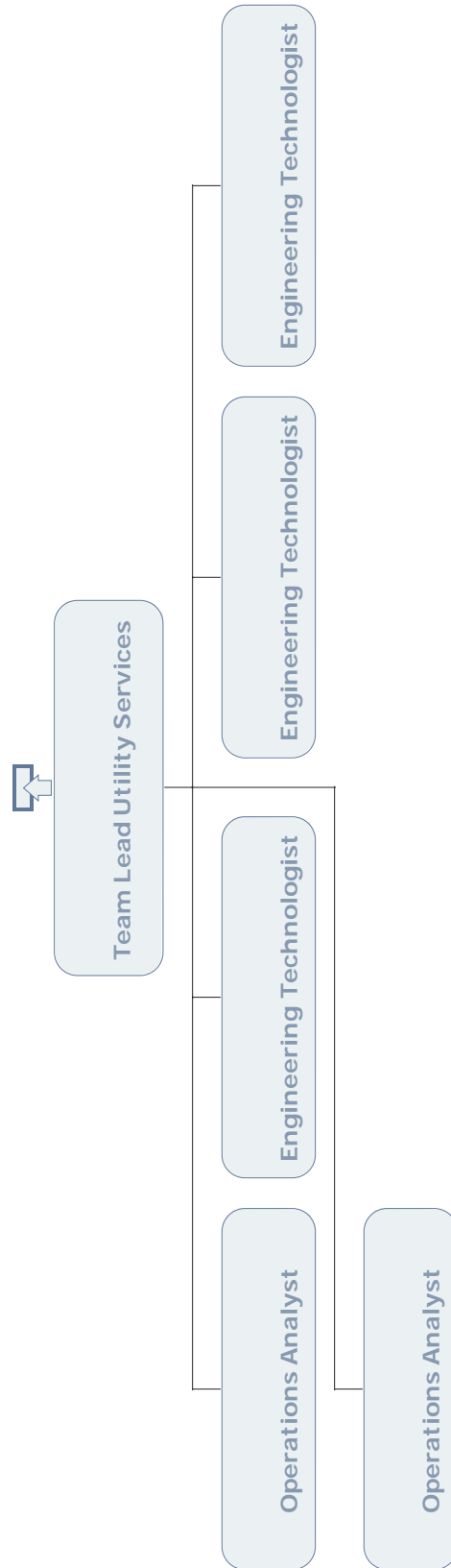
## CUSTOMER OPERATIONS ST. JOHN'S DISTRIBUTION ENGINEERING



# CUSTOMER OPERATIONS ST. JOHN'S DISTRIBUTION ENGINEERING

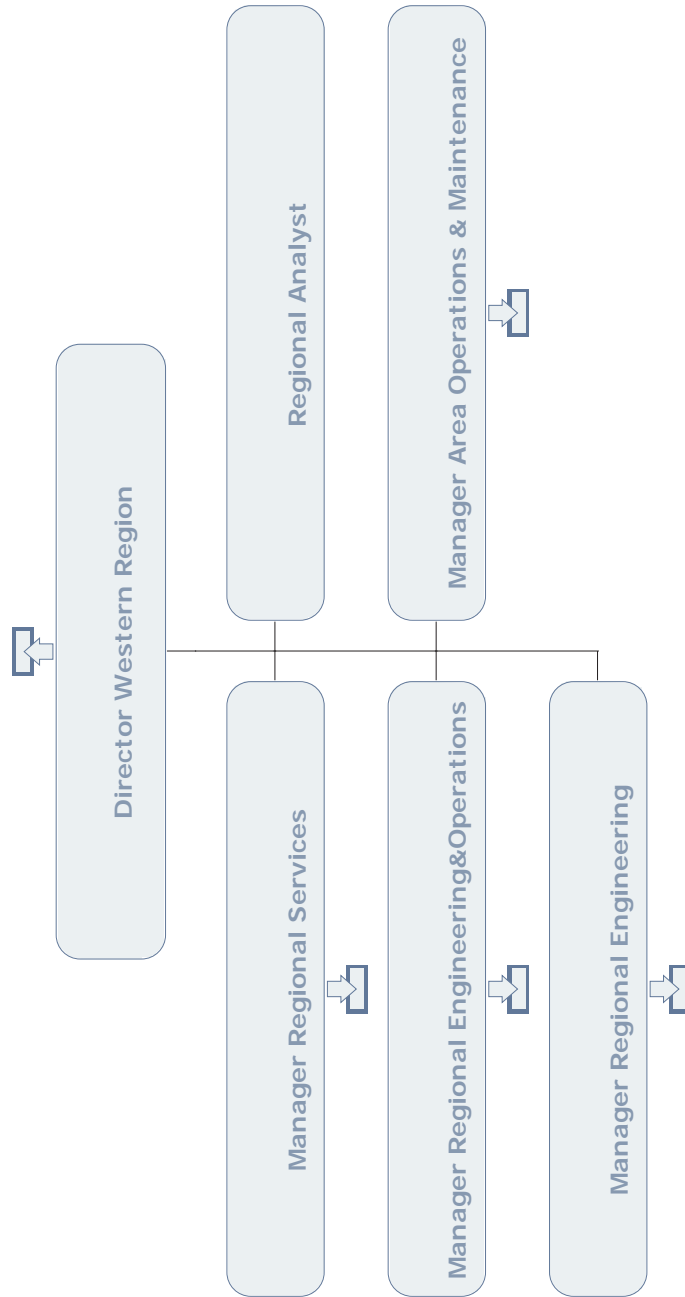


## CUSTOMER OPERATIONS UTILITY SERVICES

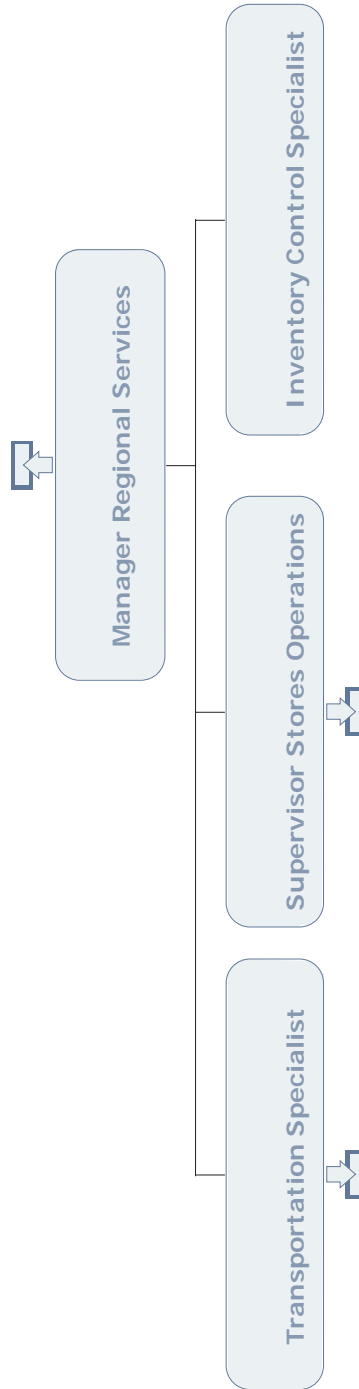




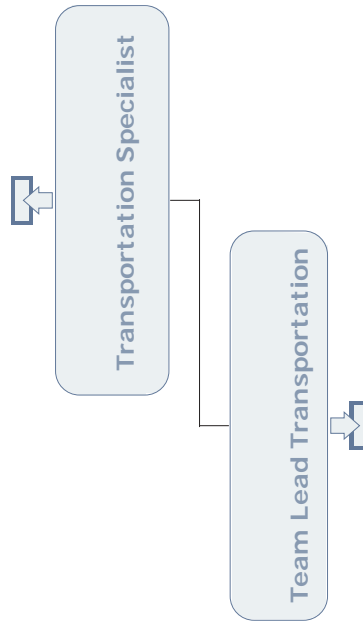
# CUSTOMER OPERATIONS WESTERN REGION



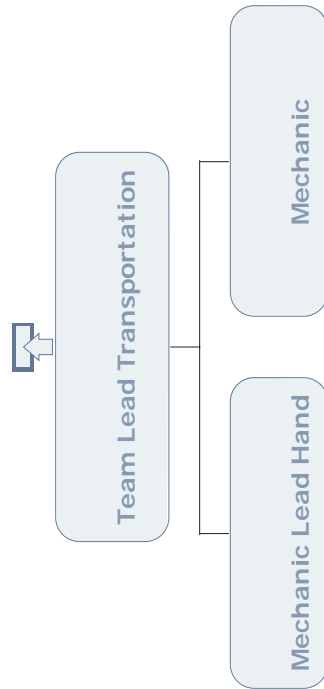
## CUSTOMER OPERATIONS ST. JOHN'S REGIONAL SERVICES



**CUSTOMER OPERATIONS  
ST. JOHN'S REGIONAL SERVICES  
TRANSPORTATION**



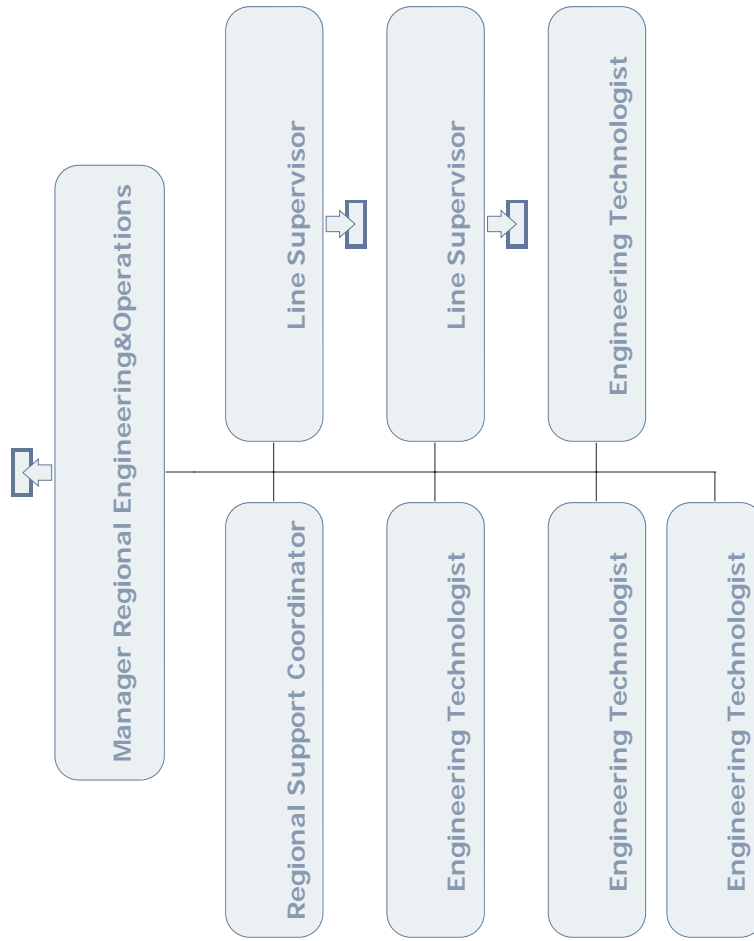
# CUSTOMER OPERATIONS ST. JOHN'S REGIONAL SERVICES TRANSPORTATION



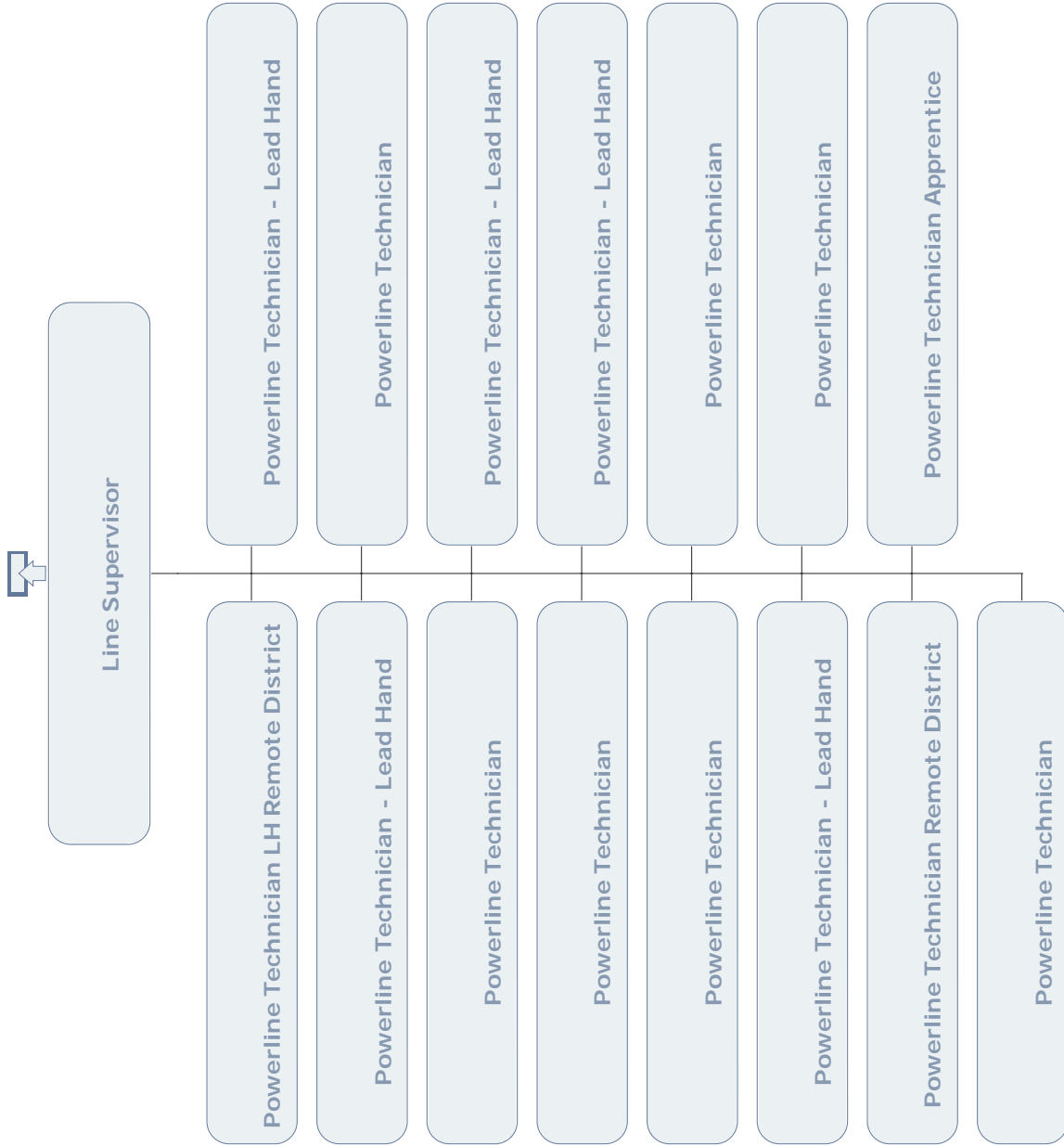
# REGIONAL STORES



# CUSTOMER OPERATIONS REGIONAL ENGINEERING & OPERATIONS WESTERN GRAND FALLS



# CUSTOMER OPERATIONS OPERATIONS, WESTERN GRAND FALLS

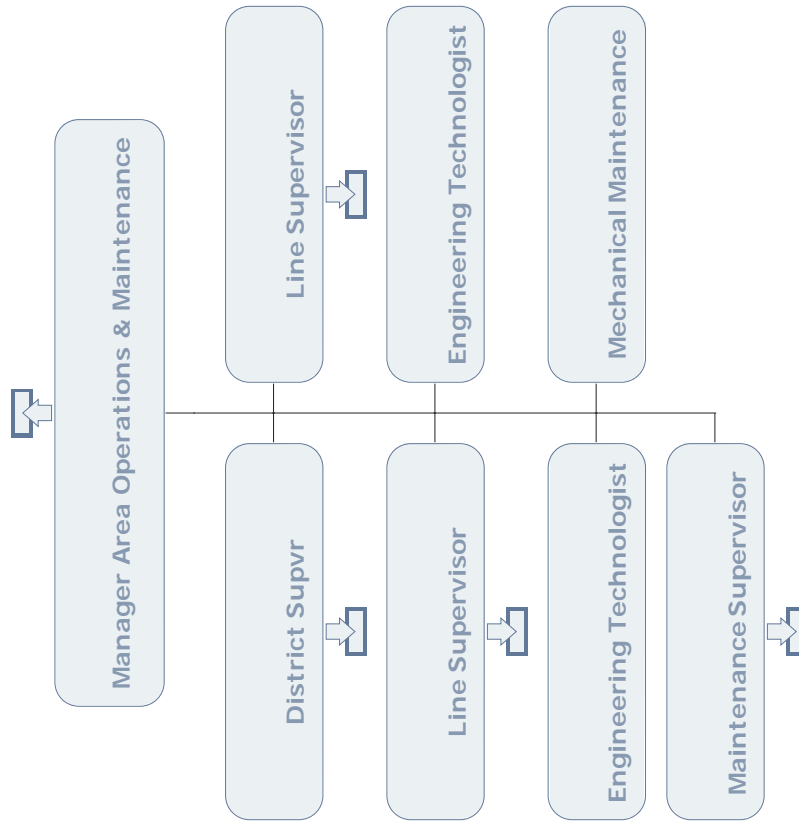


# CUSTOMER OPERATIONS OPERATIONS, WESTERN GANDER

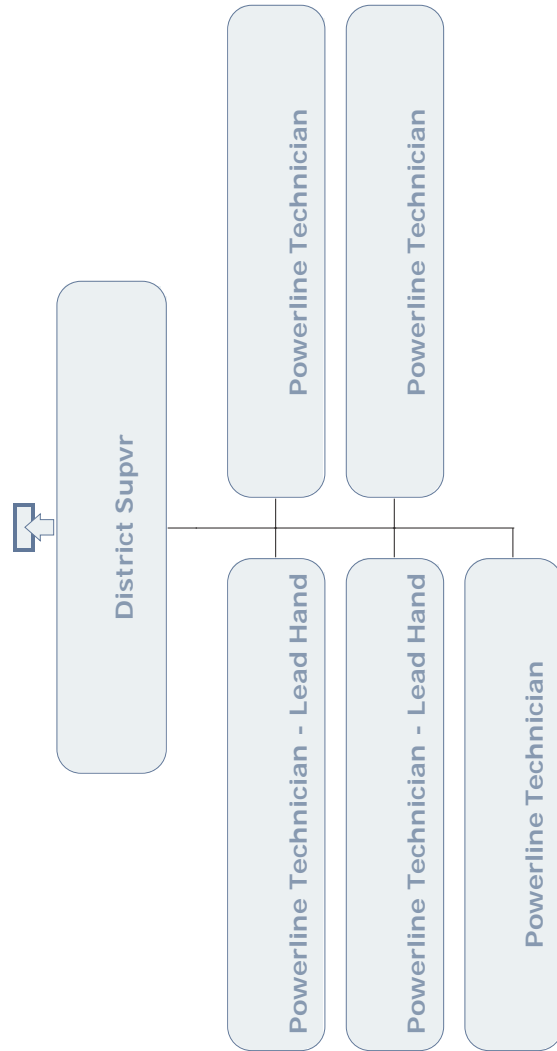




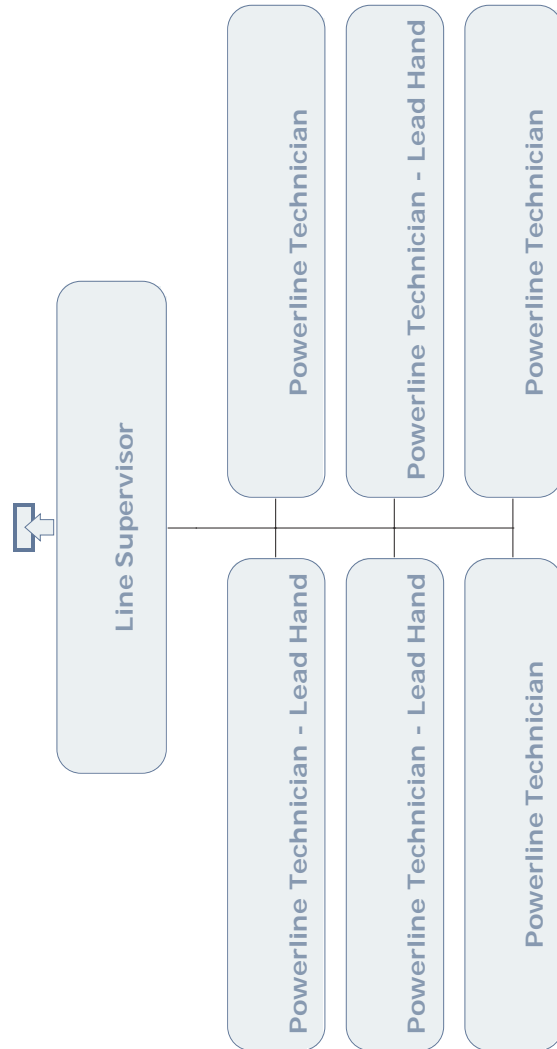
# CUSTOMER OPERATIONS OPERATIONS & MAINTENANCE, WESTERN STEPHENVILLE



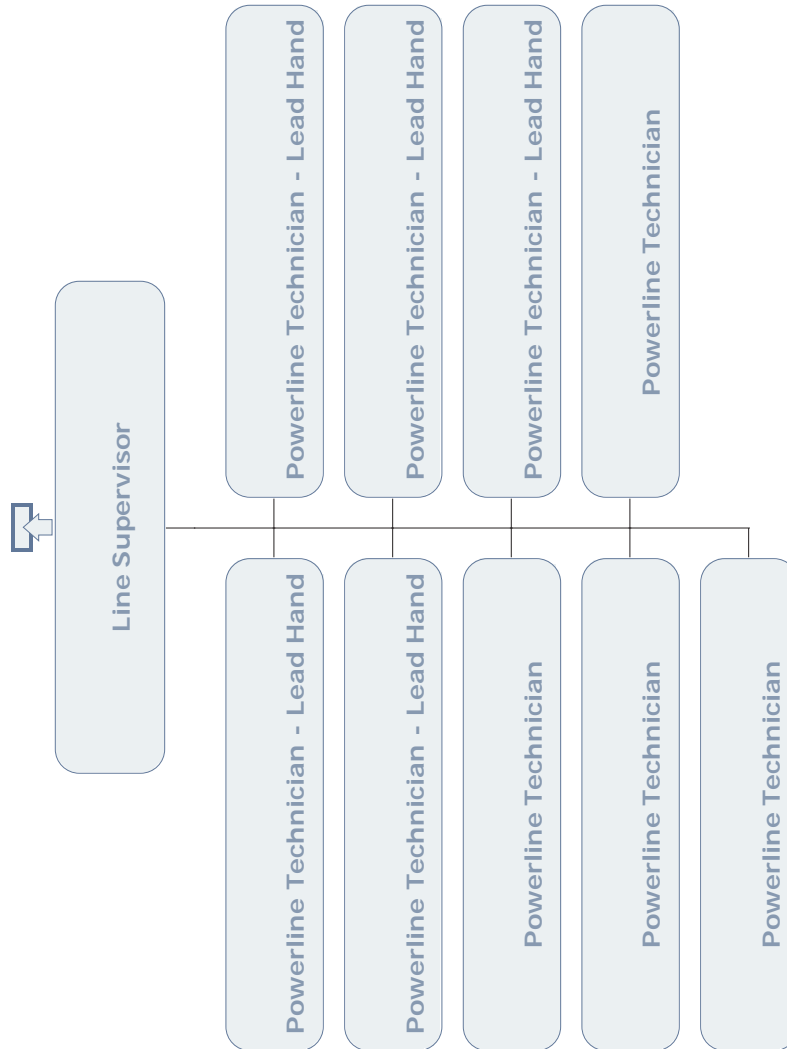
# CUSTOMER OPERATIONS OPERATIONS, WESTERN PORT AUX BASQUES



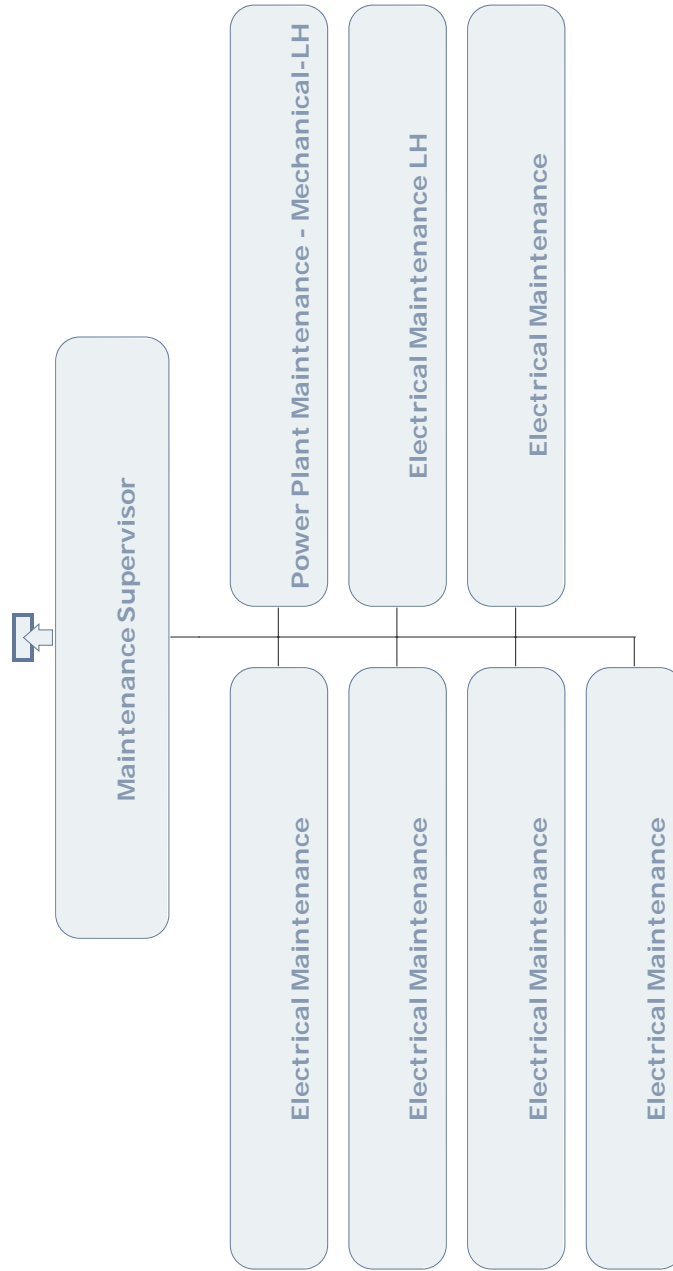
# CUSTOMER OPERATIONS OPERATIONS, WESTERN STEPHENVILLE



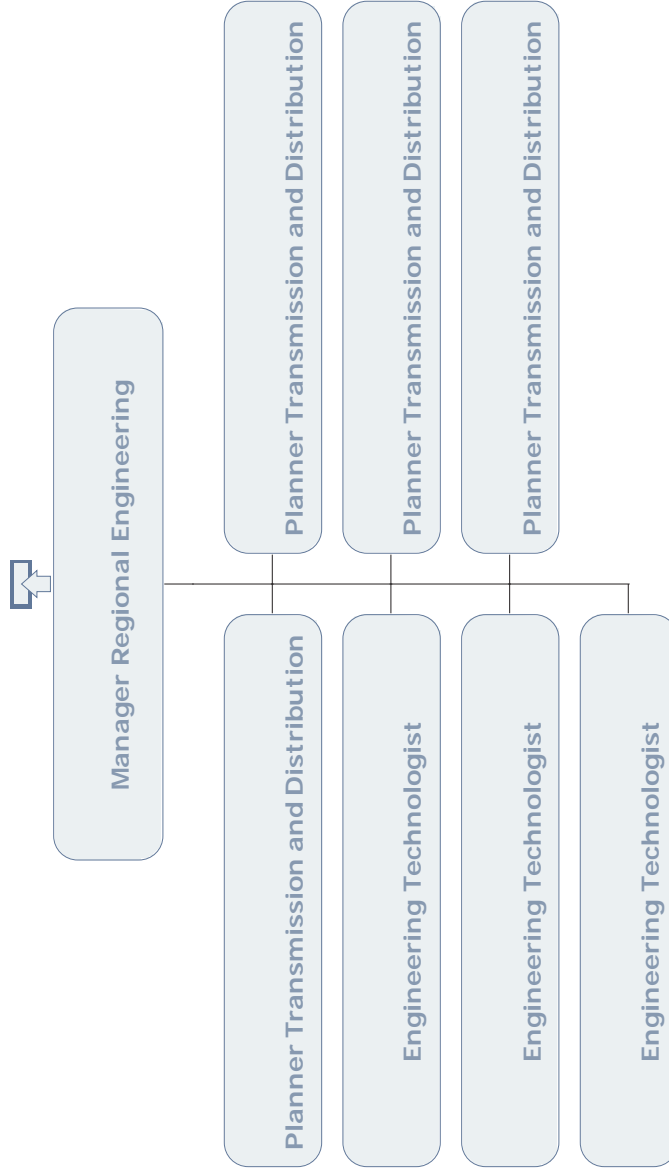
# CUSTOMER OPERATIONS WESTERN CORNER BROOK



## CUSTOMER OPERATIONS OPERATIONS, WESTERN GRAND FALLS

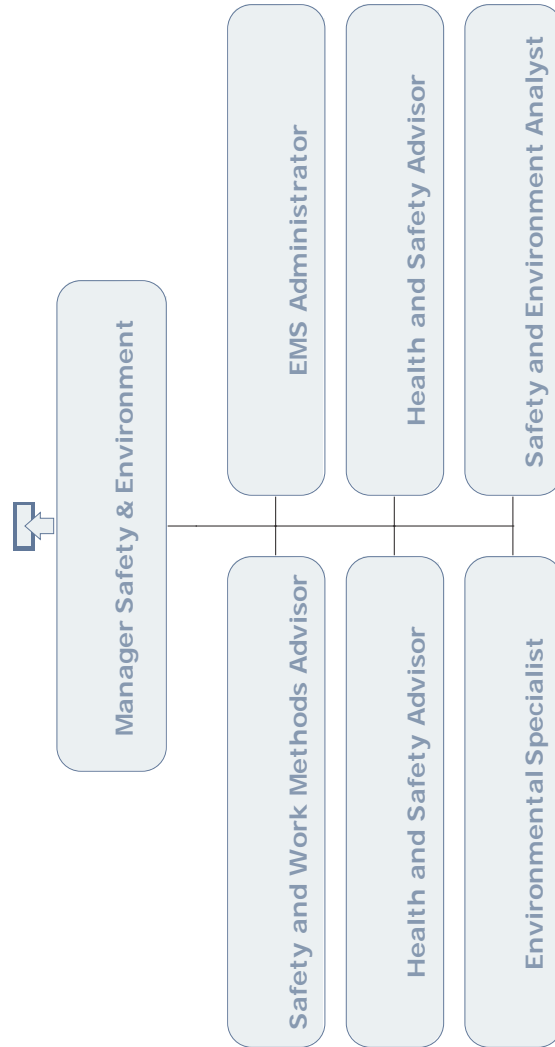


# CUSTOMER OPERATIONS WESTERN CORNER BROOK



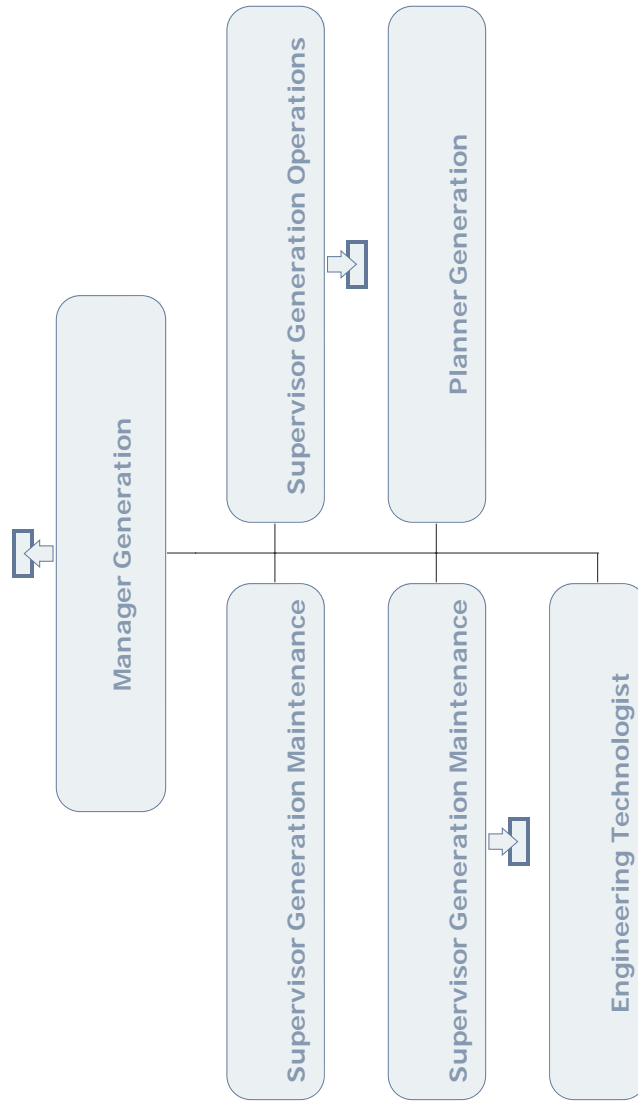


## CUSTOMER OPERATIONS SAFETY & ENVIRONMENT

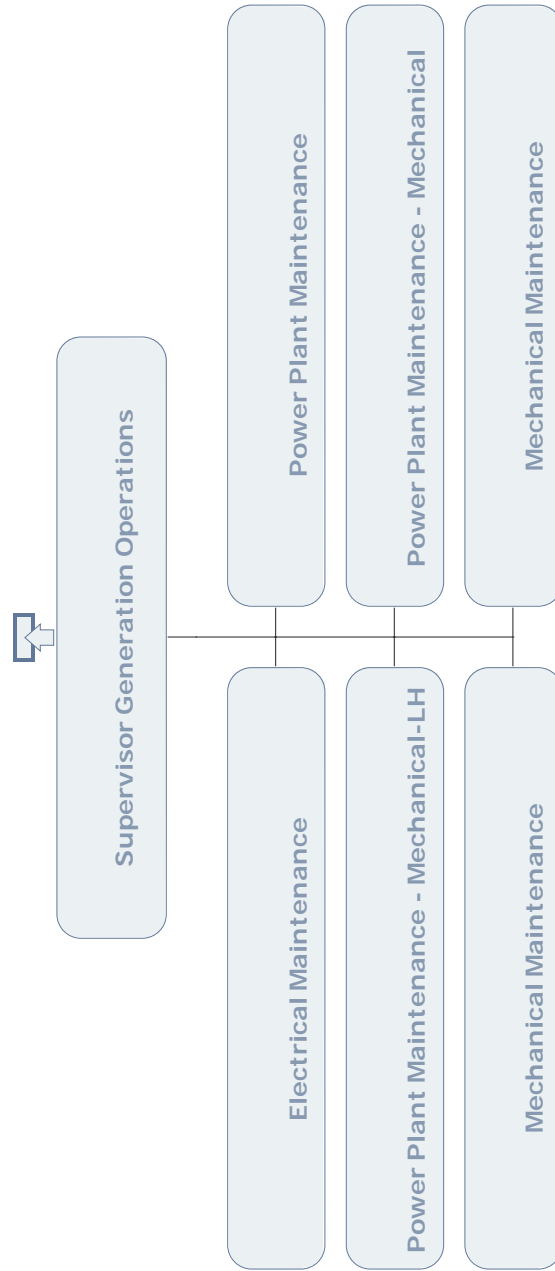




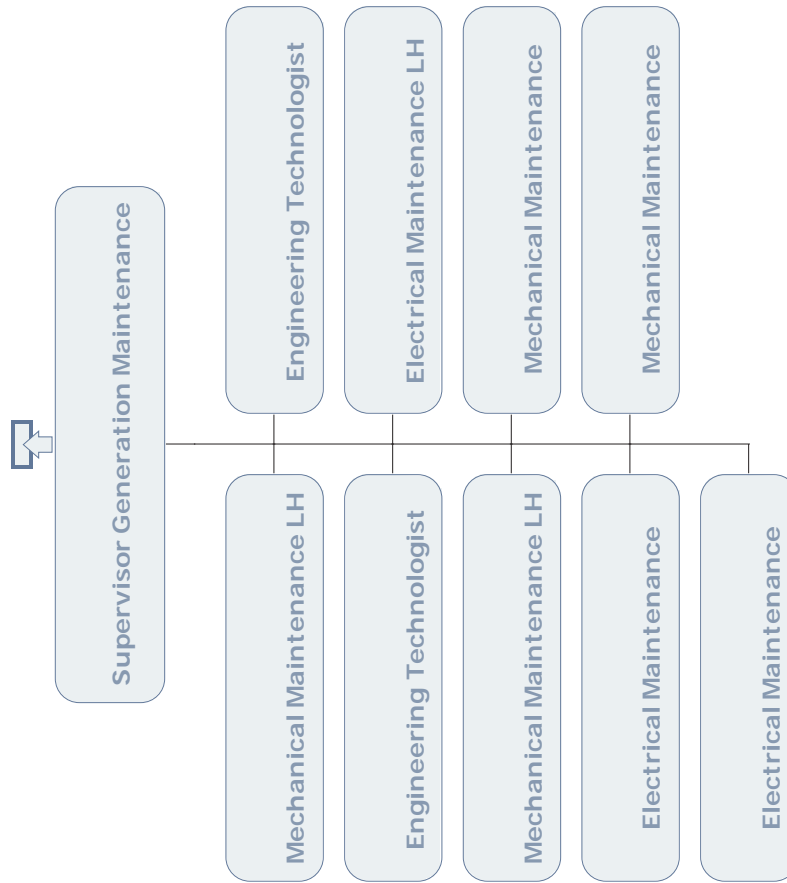
# CUSTOMER OPERATIONS GENERATION



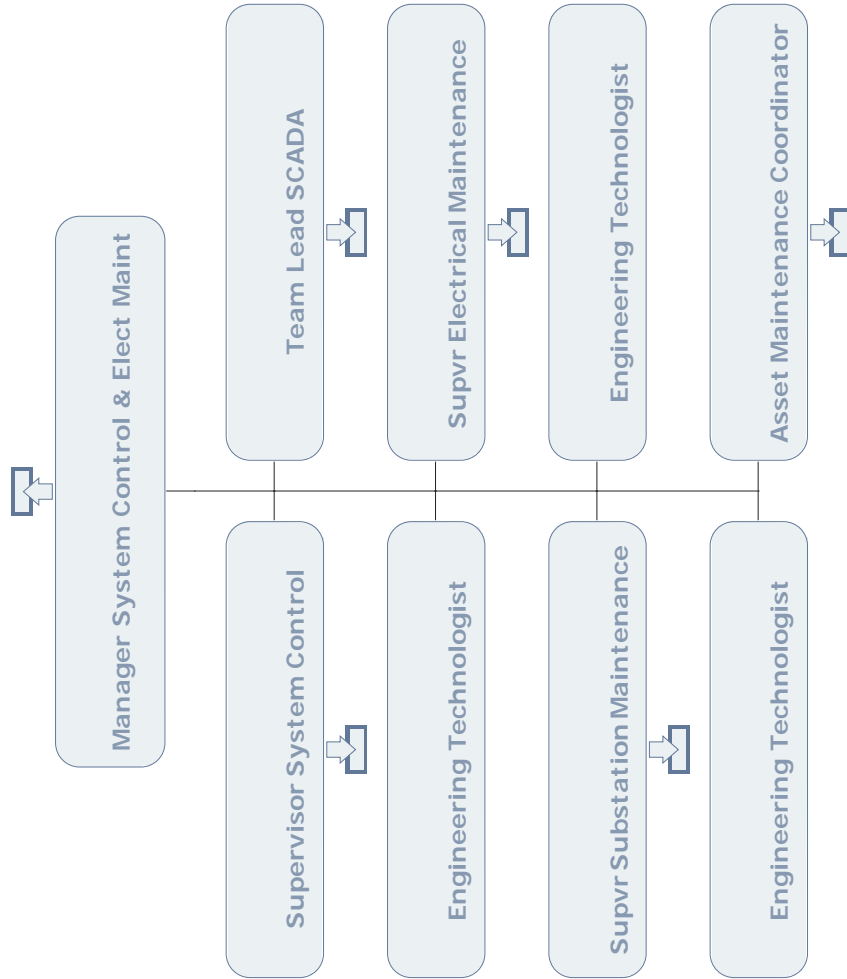
# CUSTOMER OPERATIONS GENERATION OPERATIONS



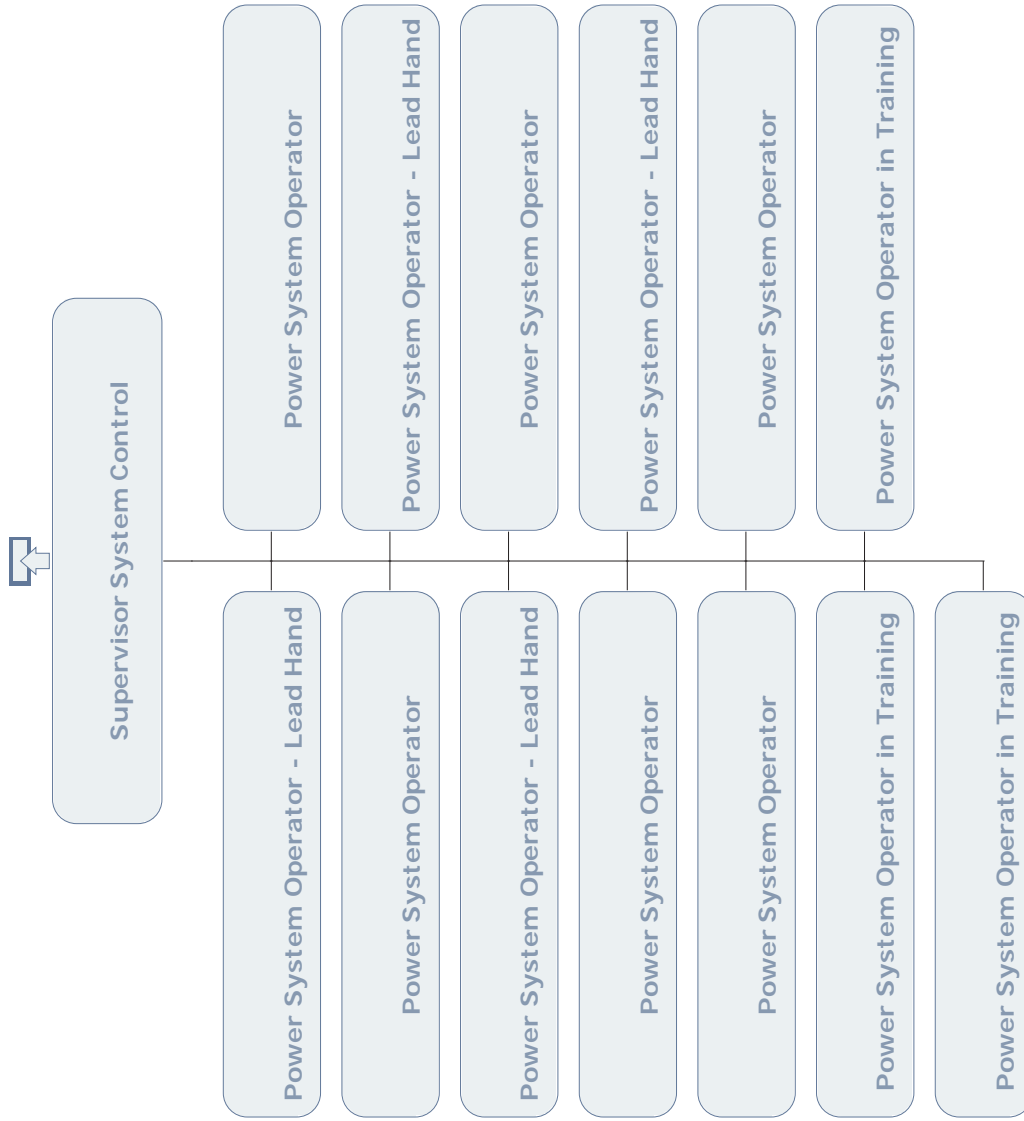
## CUSTOMER OPERATIONS GENERATION MAINTENANCE



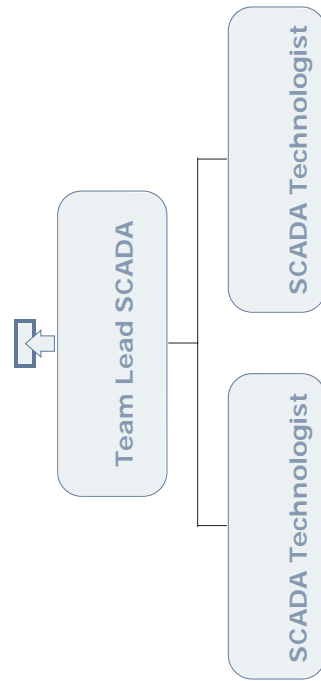
# CUSTOMER OPERATIONS SYSTEM CONTROL & ELECTRICAL MAINTENANCE



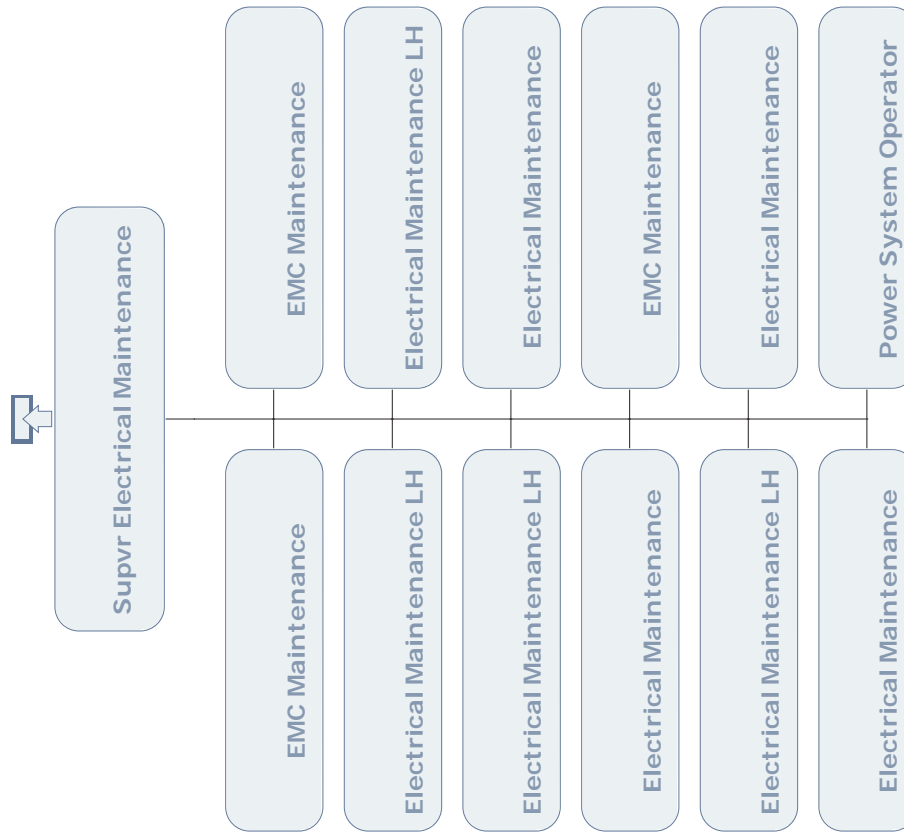
# CUSTOMER OPERATIONS SYSTEM CONTROL



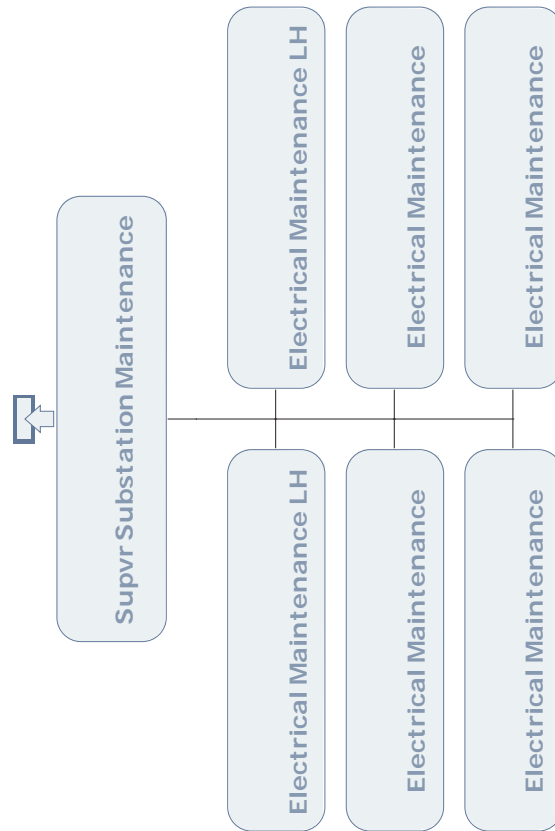
## CUSTOMER OPERATIONS SCADA



# CUSTOMER OPERATIONS ELECTRICAL MAINTENANCE

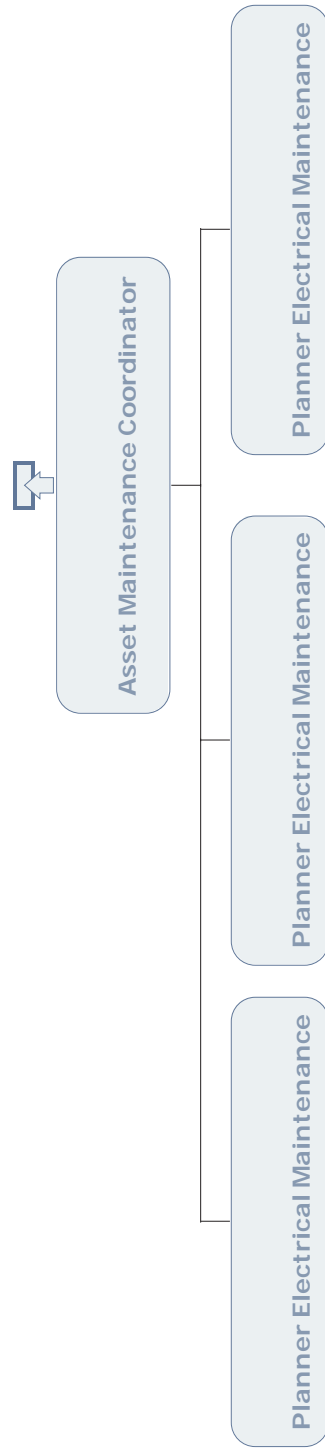


## CUSTOMER OPERATIONS SUBSTATION MAINTENANCE

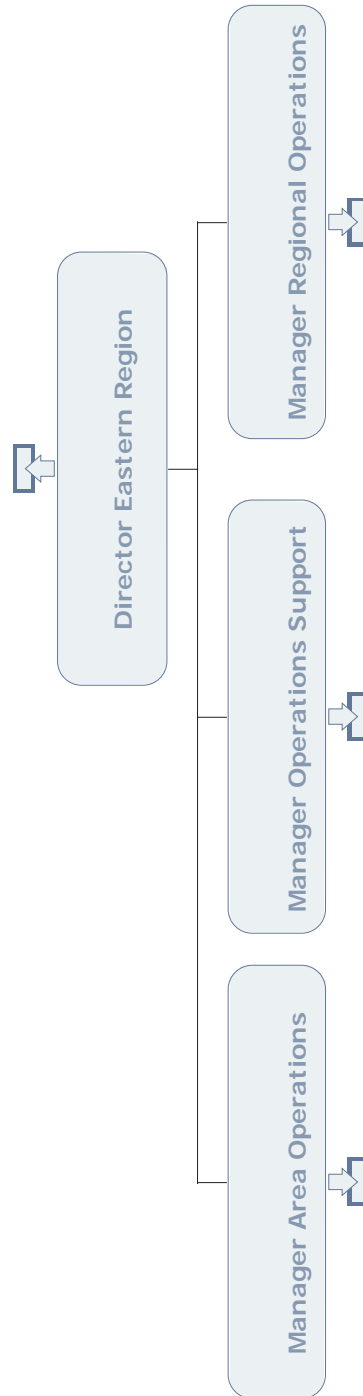




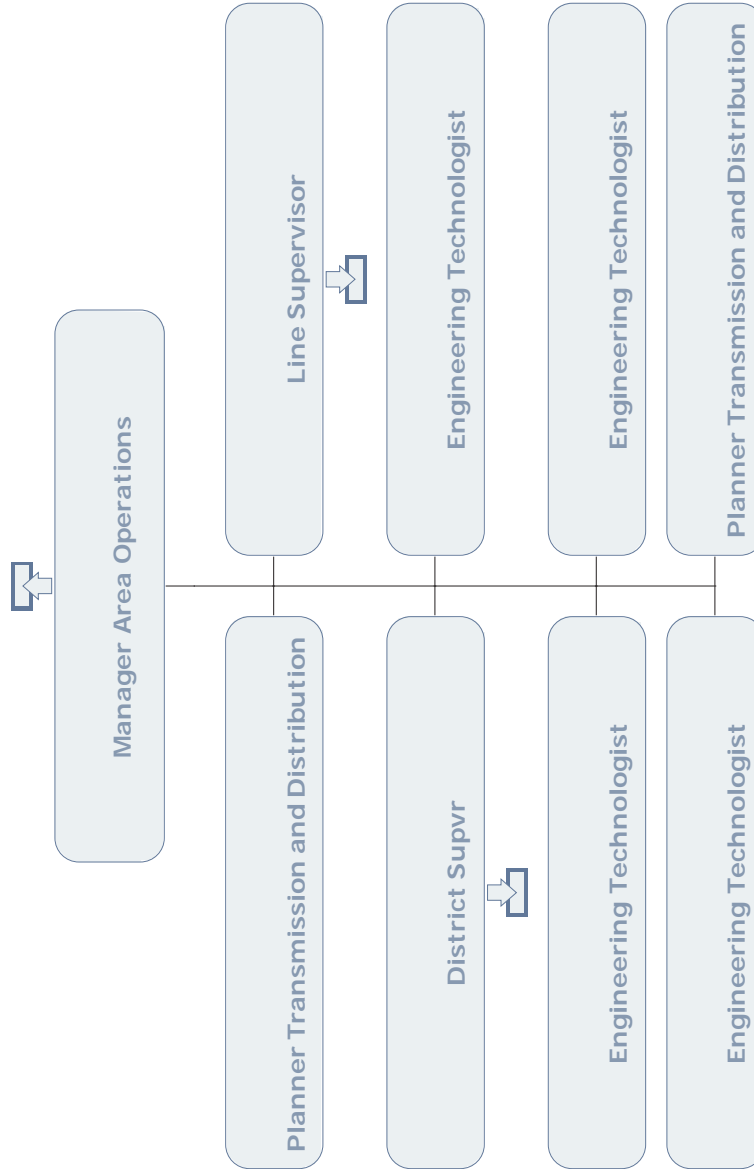
## CUSTOMER OPERATIONS



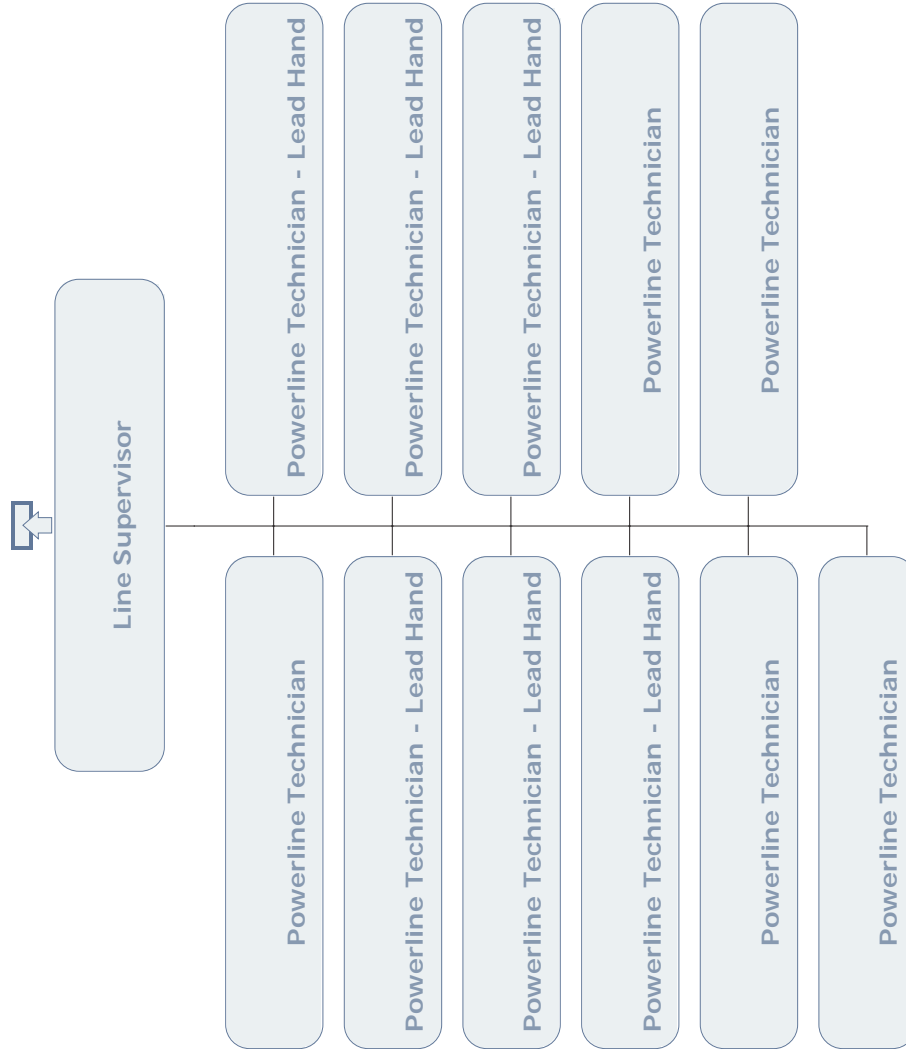
## CUSTOMER OPERATIONS OPERATIONS SUPPORT



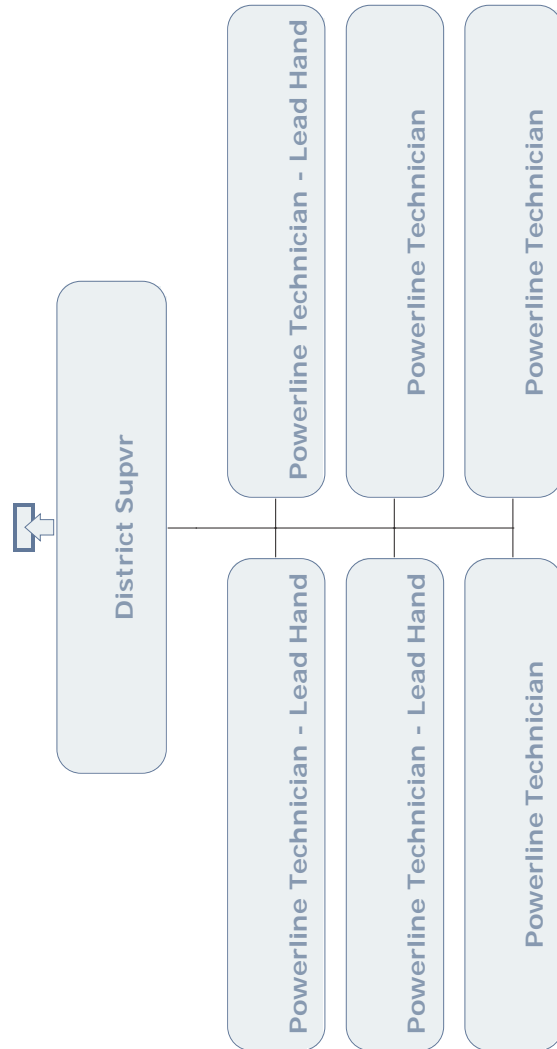
# CUSTOMER OPERATIONS EASTERN REGION AREA OPERATIONS



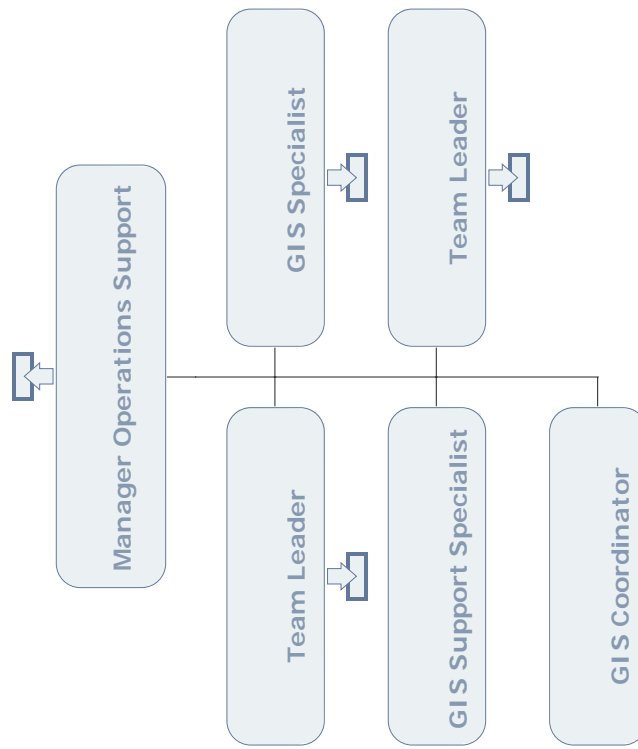
# CUSTOMER OPERATIONS EASTERN REGION AREA OPERATIONS - CARBONEAR



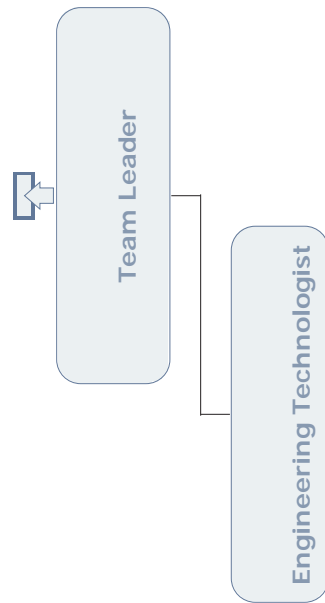
# CUSTOMER OPERATIONS EASTERN REGION AREA OPERATIONS - WHITBOURNE



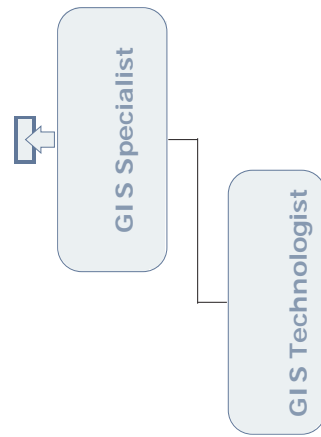
## CUSTOMER & CORPORATE RELATIONS CUSTOMER OPERATIONS



## CUSTOMER OPERATIONS OPERATIONS SUPPORT

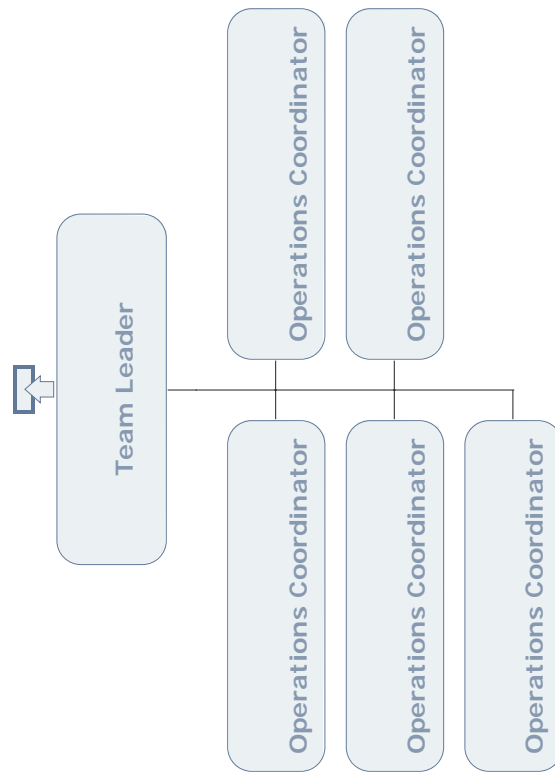


## CUSTOMER OPERATIONS OPERATIONS SUPPORT

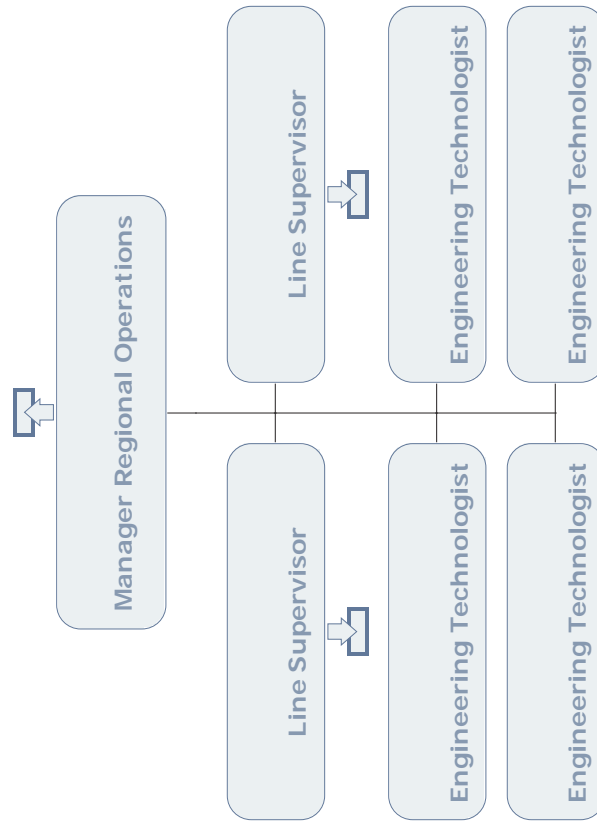




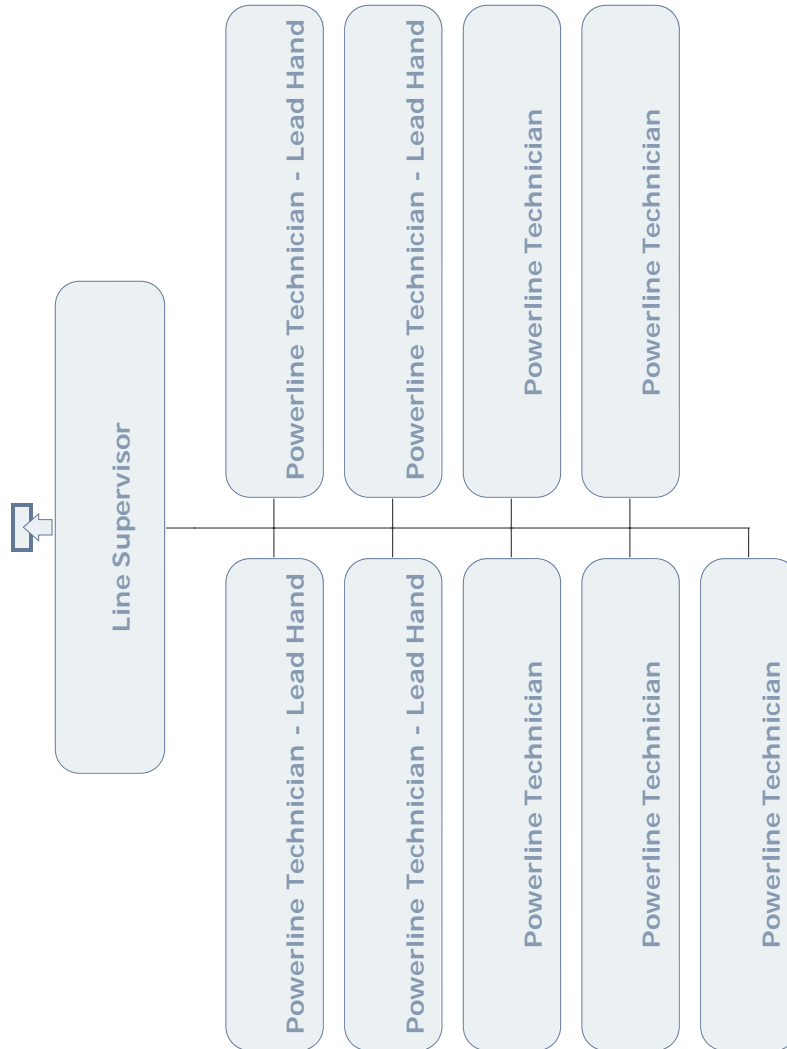
## CUSTOMER OPERATIONS OPERATIONS SUPPORT



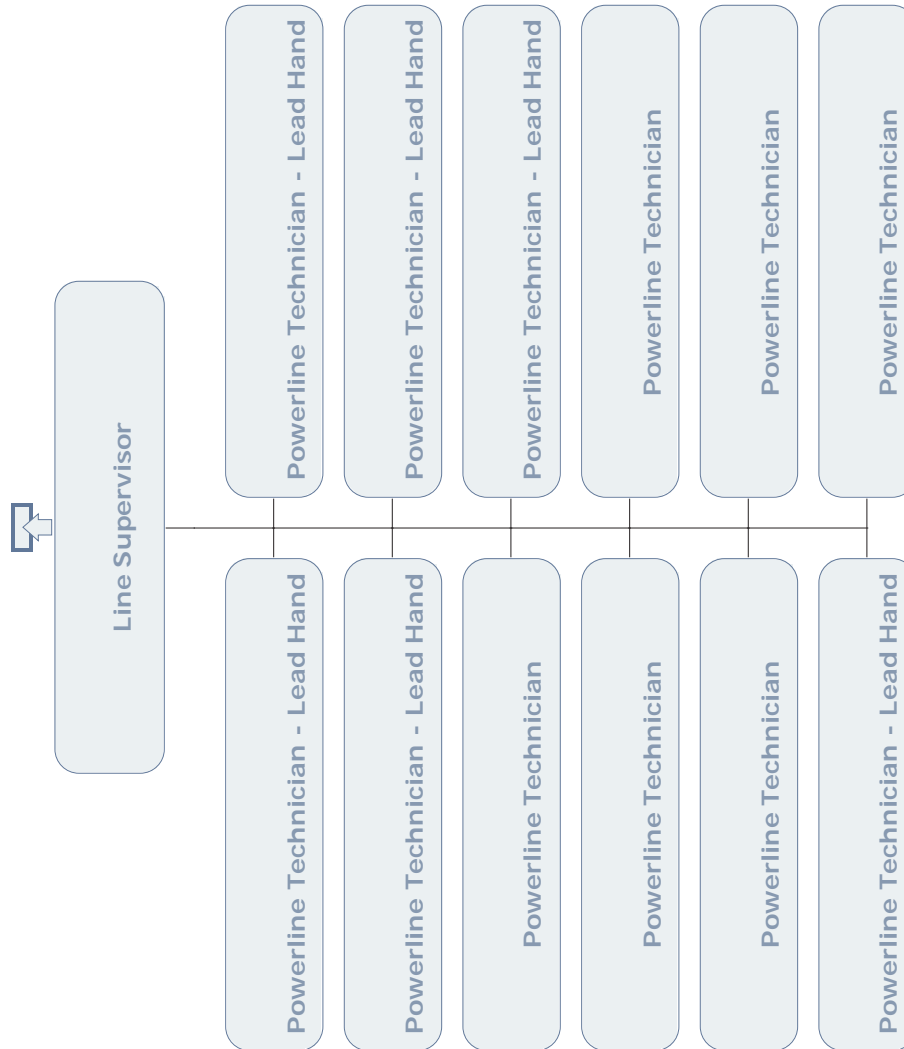
# CUSTOMER OPERATIONS OPERATIONS SUPPORT



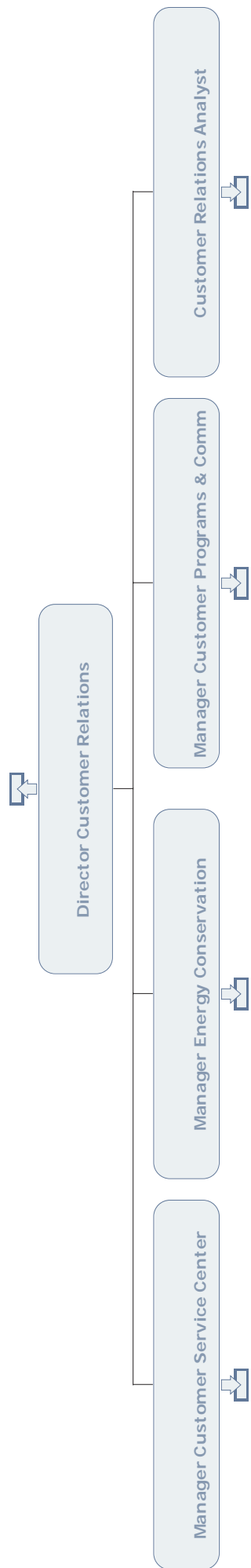
## CUSTOMER OPERATIONS EASTERN REGION ENGINEERING, BURIN



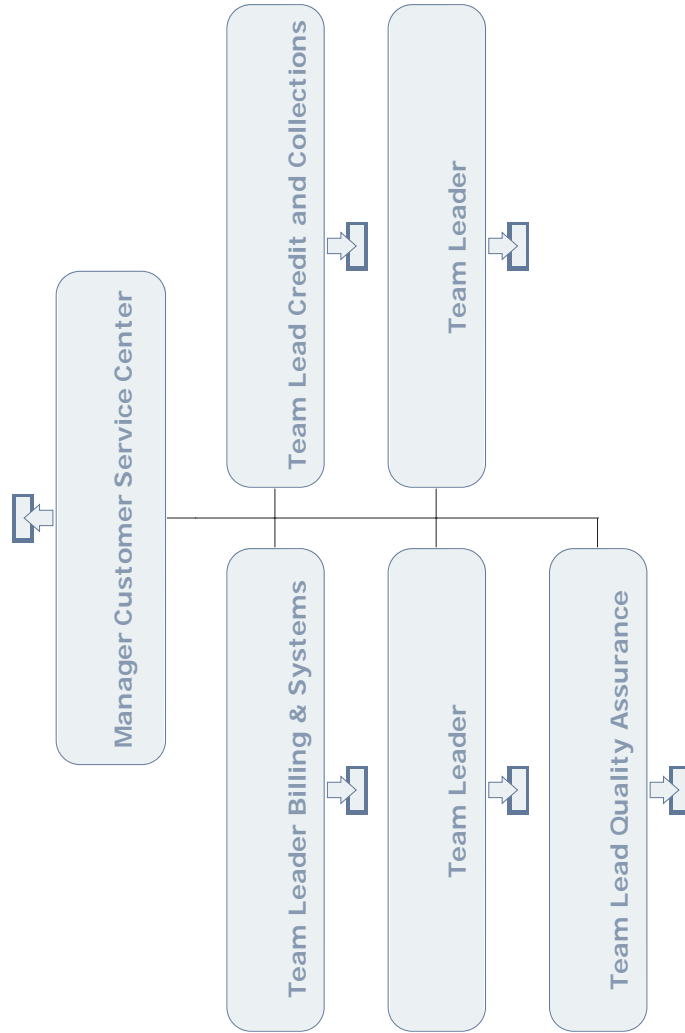
# CUSTOMER OPERATIONS EASTERN REGION OPERATIONS, CLARENVILLE



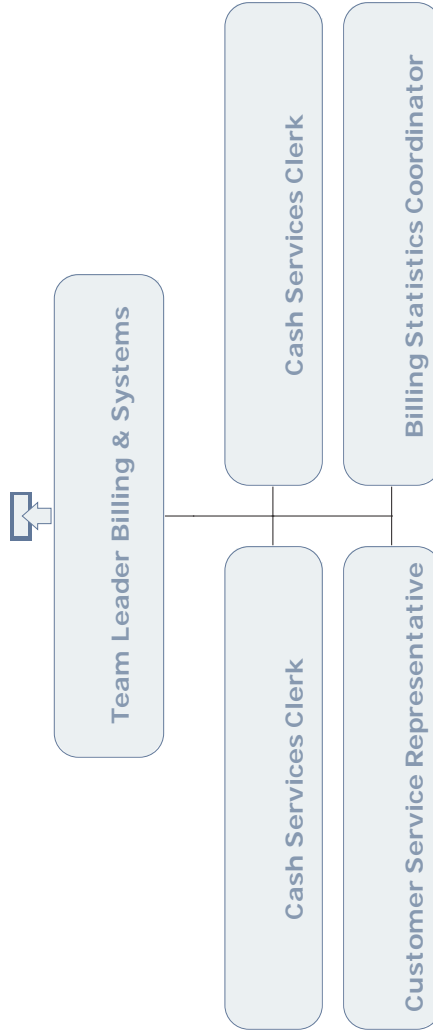
**CUSTOMER OPERATIONS  
CUSTOMER RELATIONS**



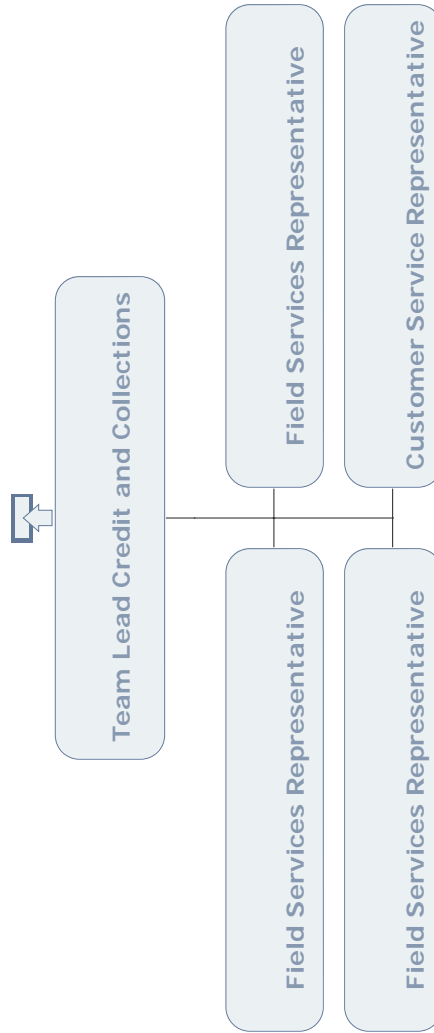
# CUSTOMER & CORPORATE RELATIONS CUSTOMER RELATIONS



# CUSTOMER & CORPORATE RELATIONS CUSTOMER RELATIONS

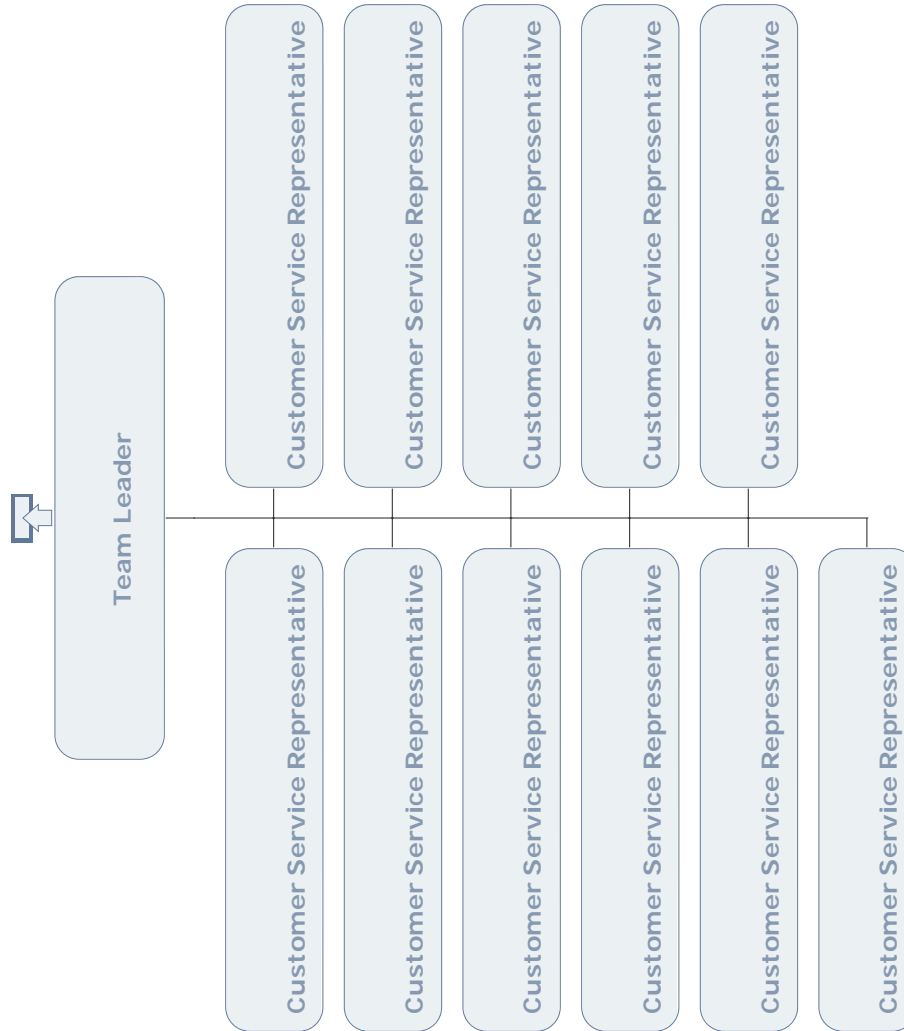


## CUSTOMER & CORPORATE RELATIONS CUSTOMER RELATIONS



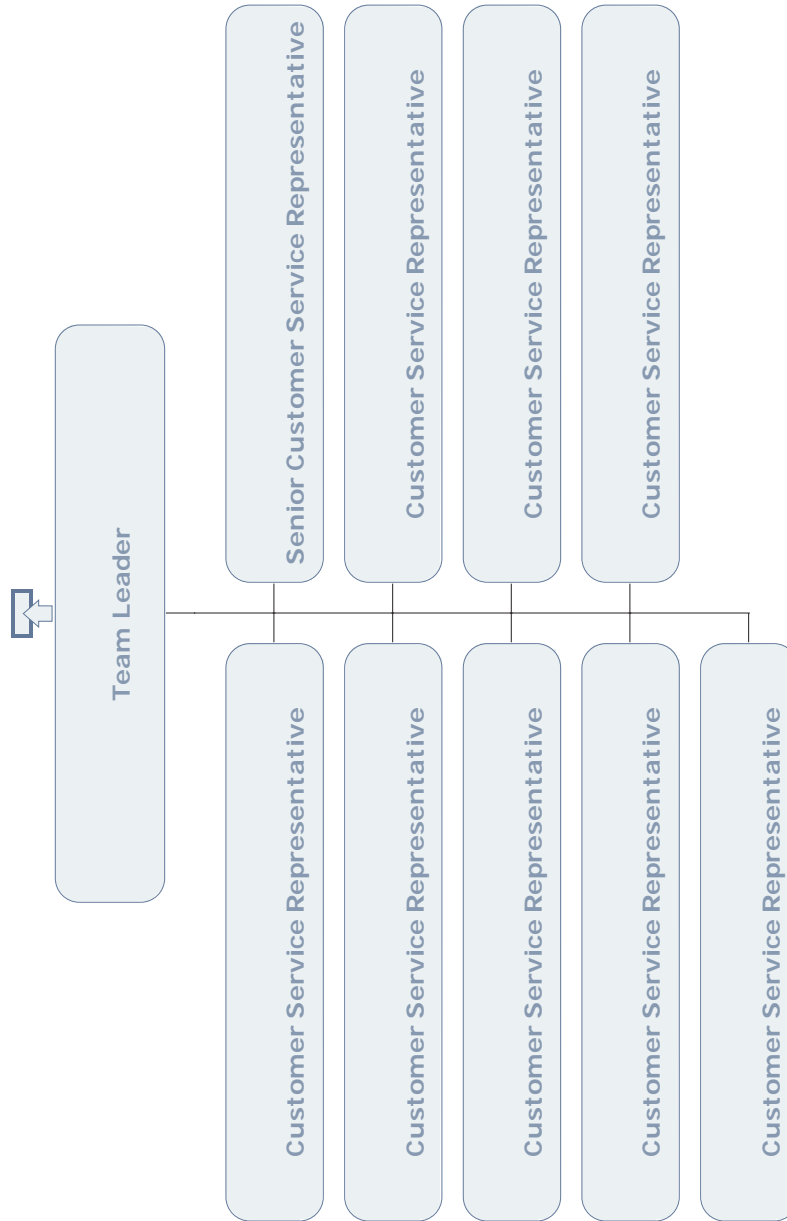


# CUSTOMER & CORPORATE RELATIONS CUSTOMER RELATIONS



# CUSTOMER & CORPORATE RELATIONS

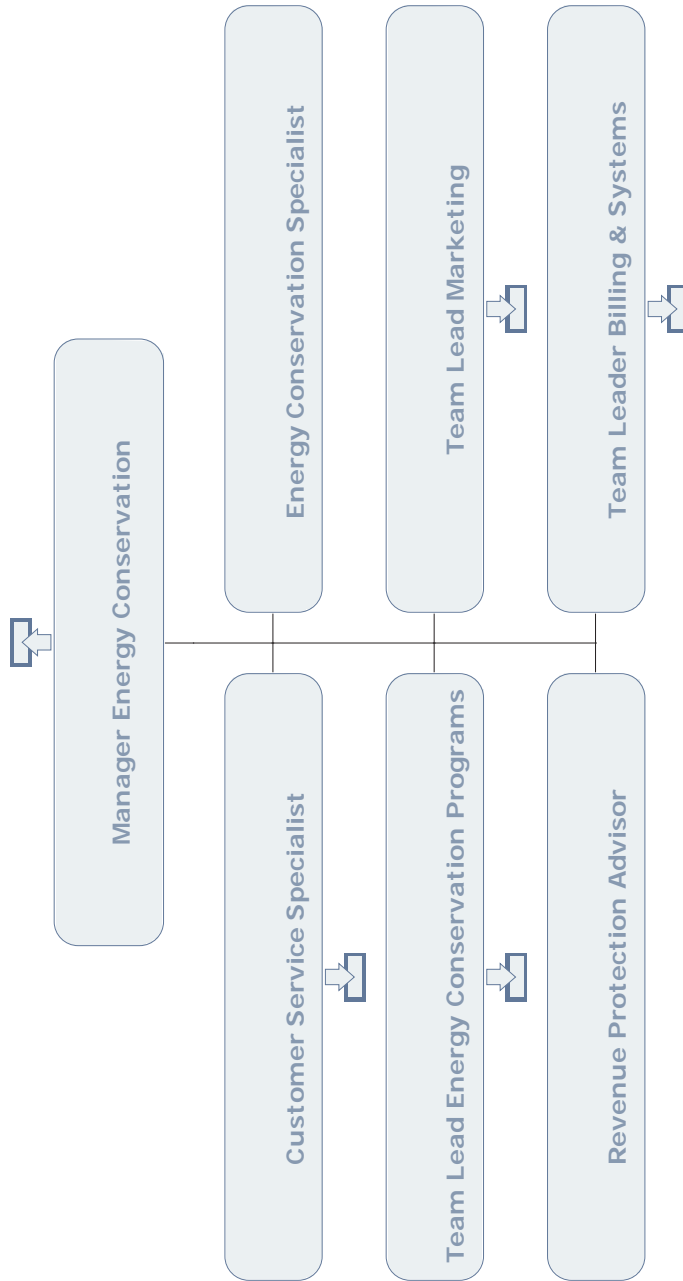
## CUSTOMER RELATIONS



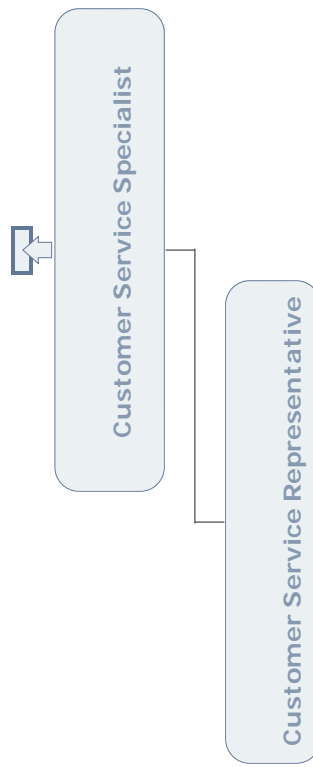
# CUSTOMER & CORPORATE RELATIONS CUSTOMER RELATIONS



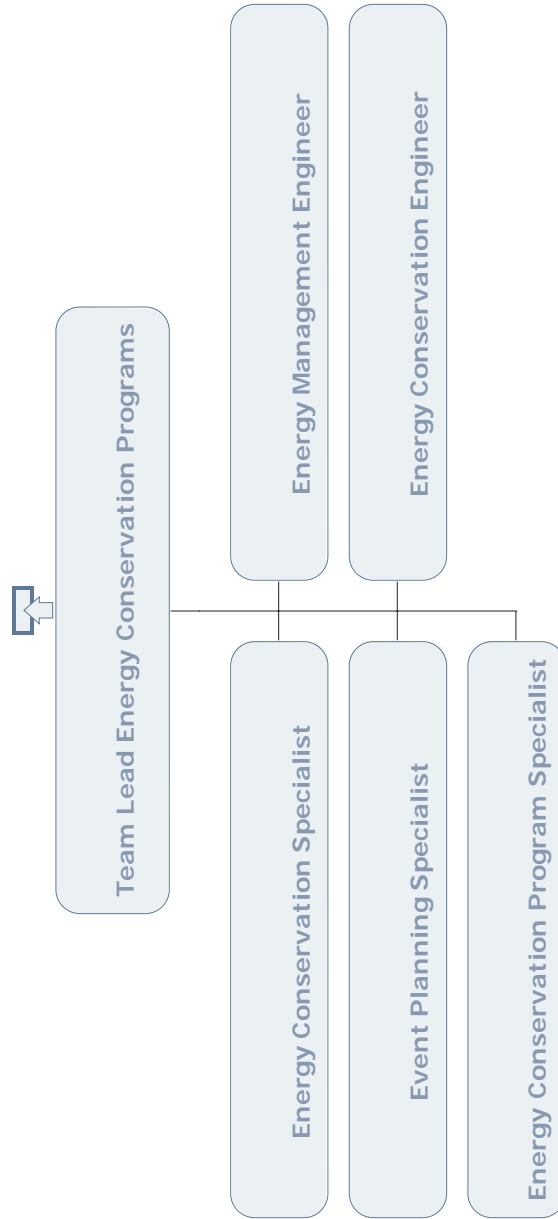
**CORPORATE AFFAIRS, FINANCE & HUMAN RESOURCES  
ENERGY CONSERVATION**



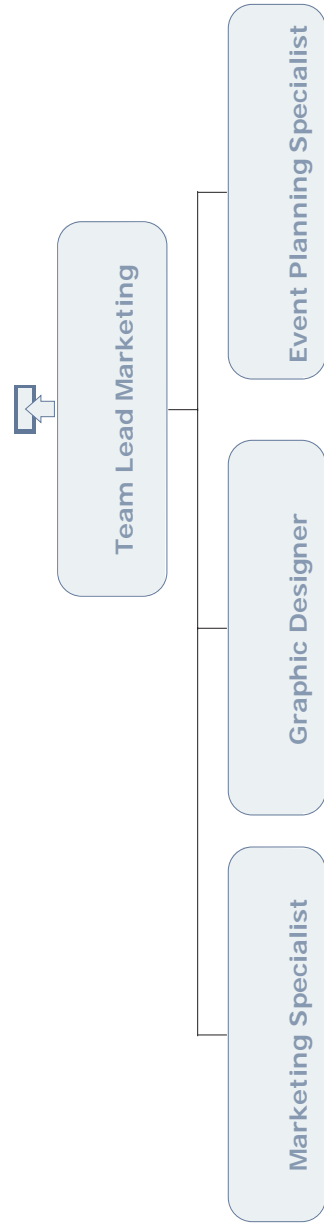
# CORPORATE AFFAIRS, FINANCE & HUMAN RESOURCES ENERGY CONSERVATION



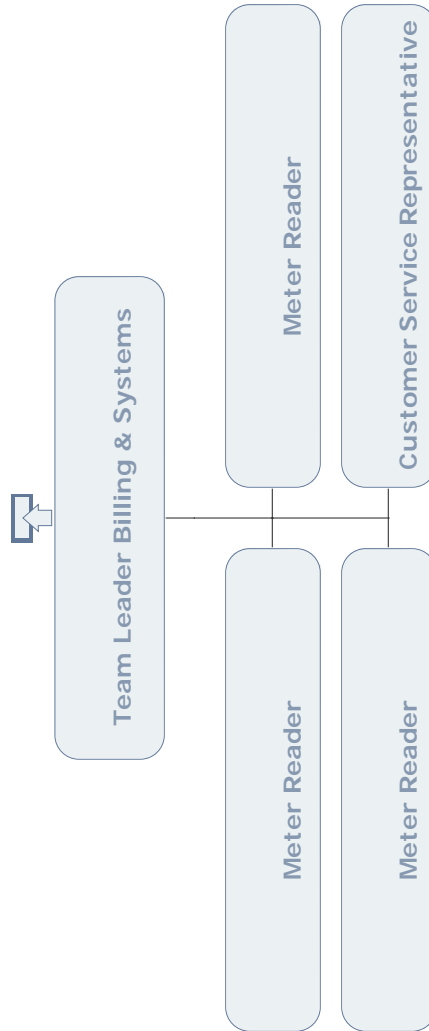
## CORPORATE AFFAIRS, FINANCE & HUMAN RESOURCES ENERGY CONSERVATION



**CORPORATE AFFAIRS, FINANCE & HUMAN RESOURCES  
MARKETING**

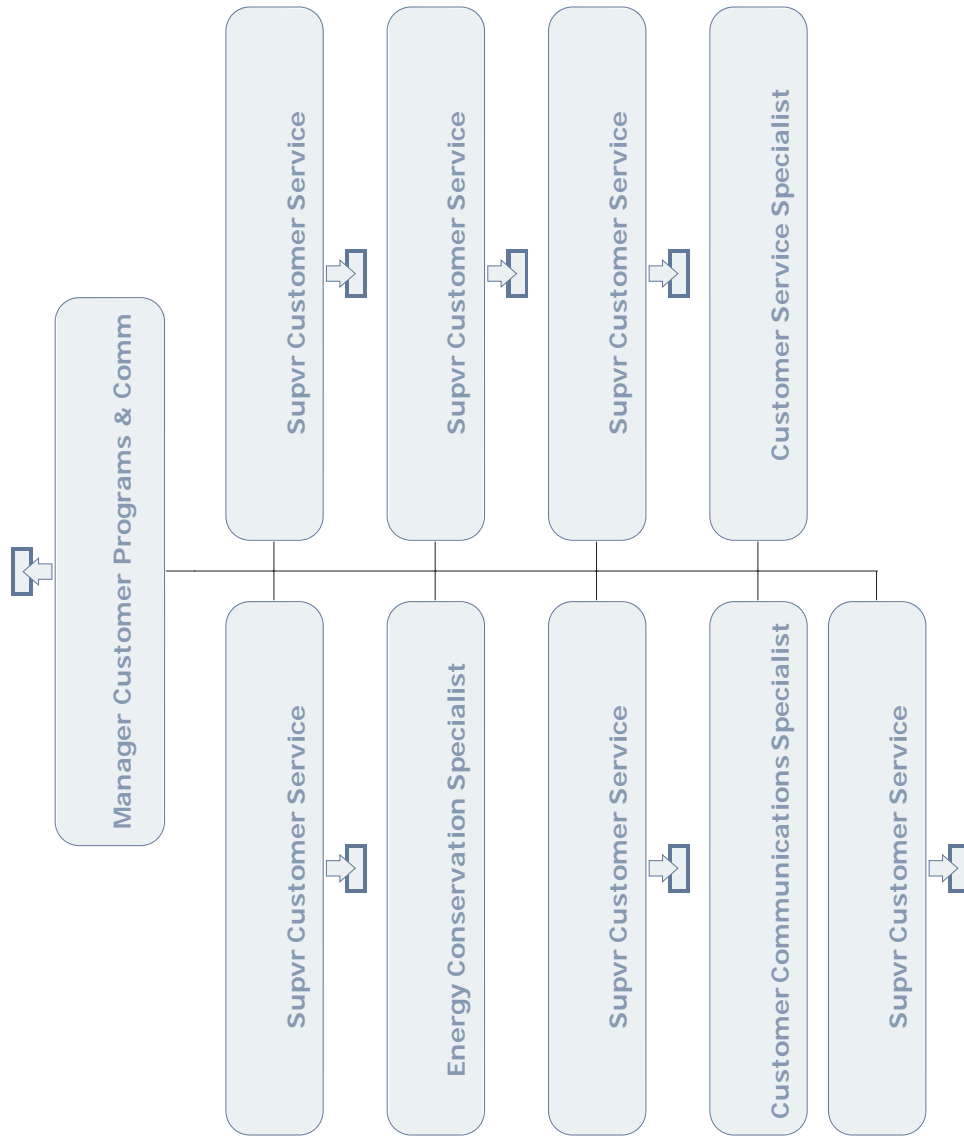


## CUSTOMER & CORPORATE RELATIONS CUSTOMER RELATIONS

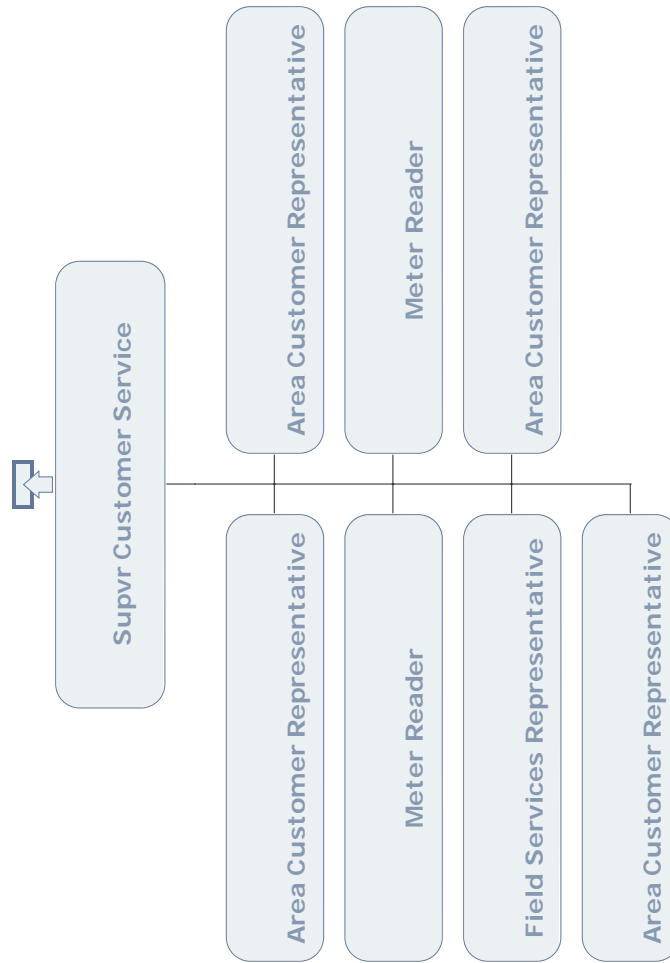




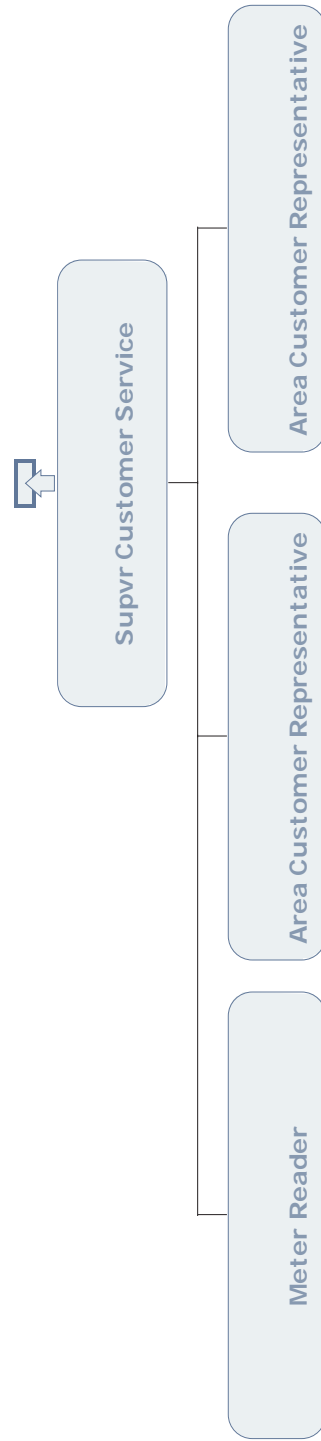
# CUSTOMER & CORPORATE RELATIONS CUSTOMER RELATIONS



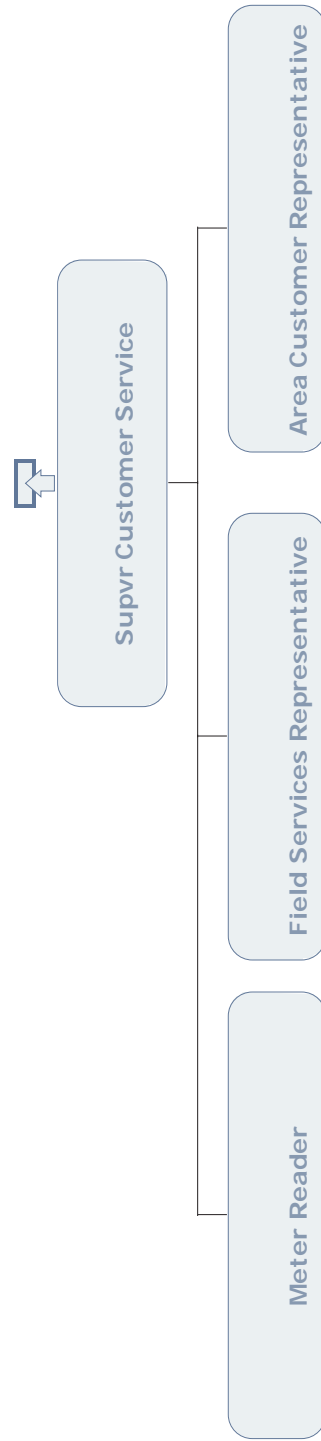
## CUSTOMER & CORPORATE RELATIONS CUSTOMER RELATIONS



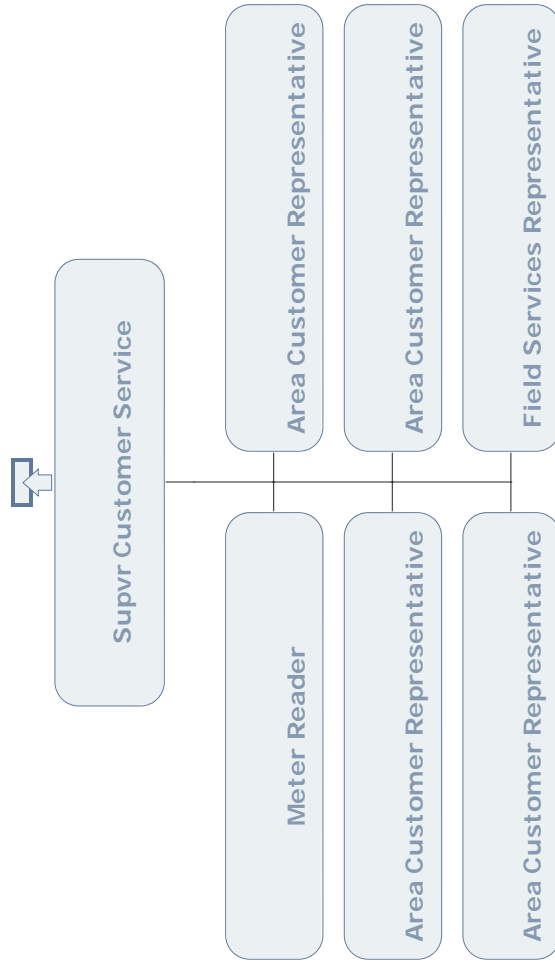
## CUSTOMER & CORPORATE RELATIONS CUSTOMER RELATIONS



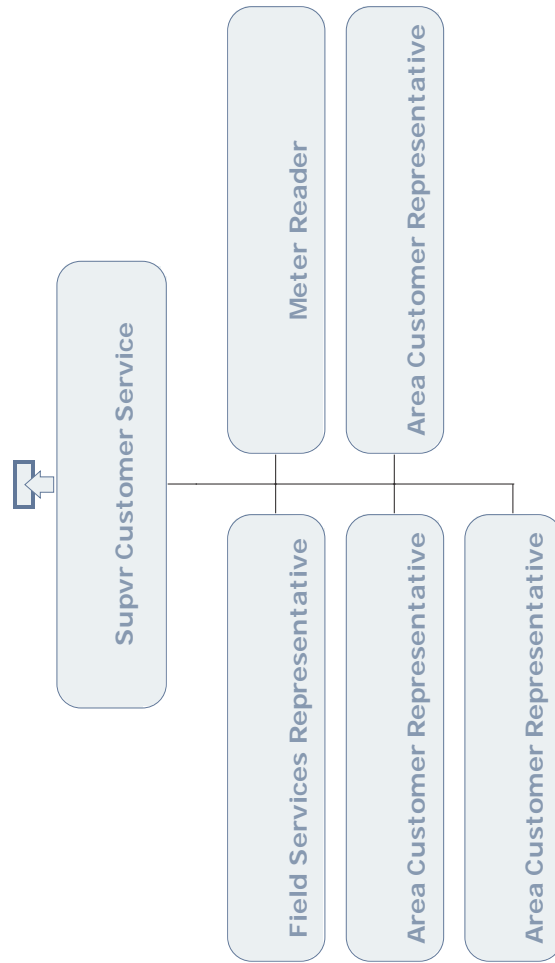
## CUSTOMER & CORPORATE RELATIONS CUSTOMER RELATIONS



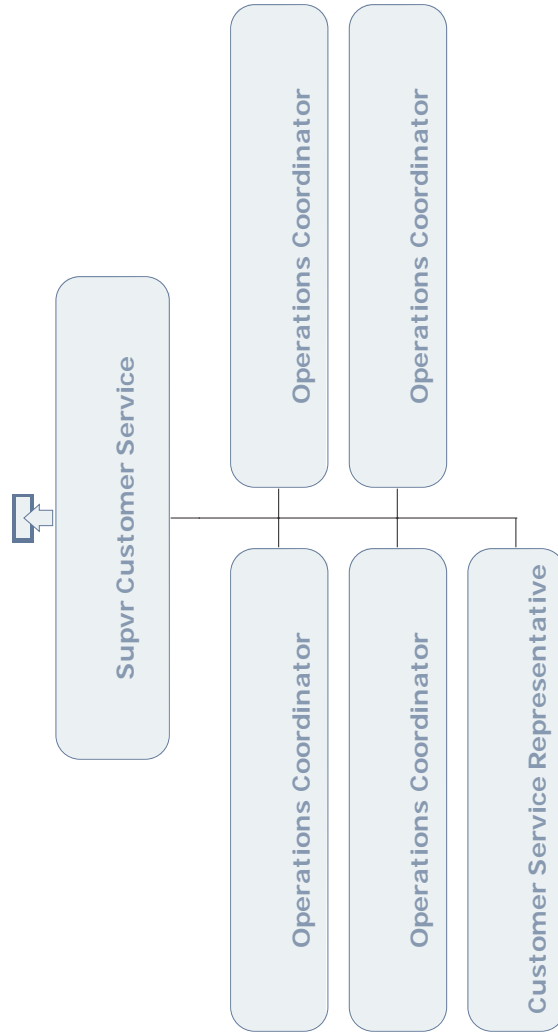
# CUSTOMER & CORPORATE RELATIONS CUSTOMER RELATIONS



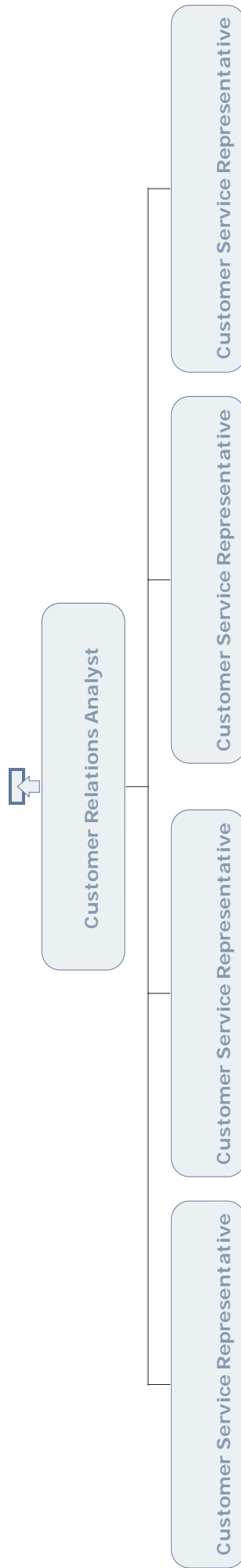
## CUSTOMER & CORPORATE RELATIONS CUSTOMER RELATIONS



## CUSTOMER & CORPORATE RELATIONS CUSTOMER RELATIONS

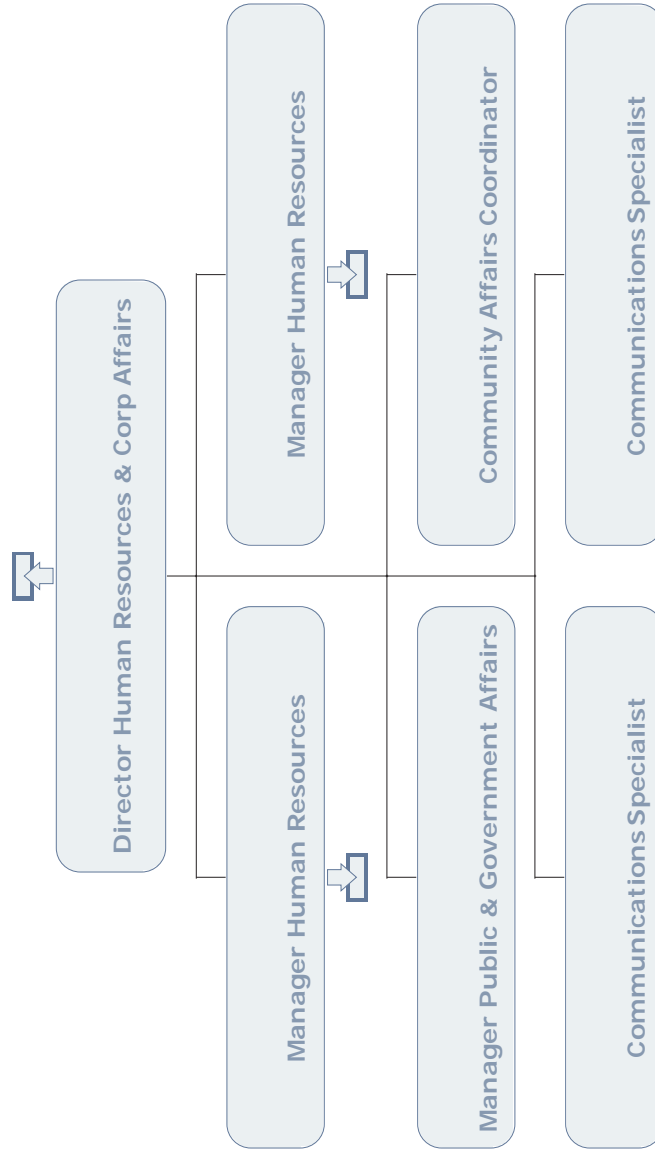


**CUSTOMER & CORPORATE RELATIONS  
CUSTOMER RELATIONS**

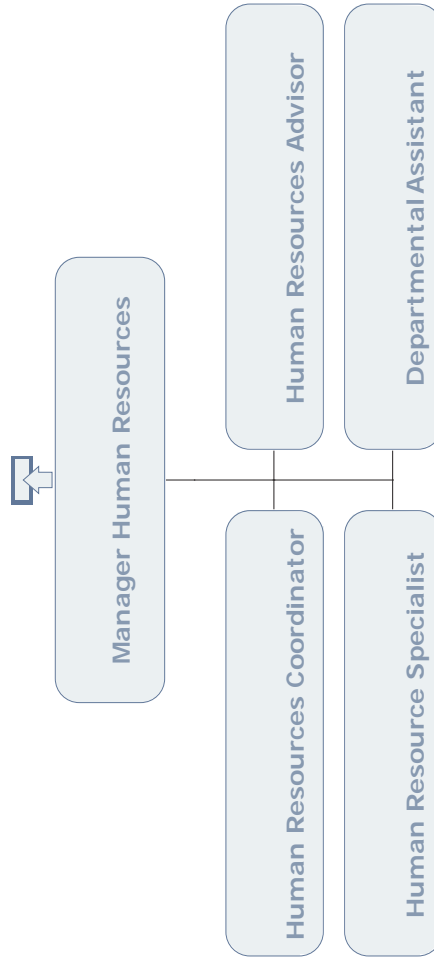




## CORPORATE AFFAIRS, FINANCE & HUMAN RESOURCES HUMAN RESOURCES & CORPORATE AFFAIRS

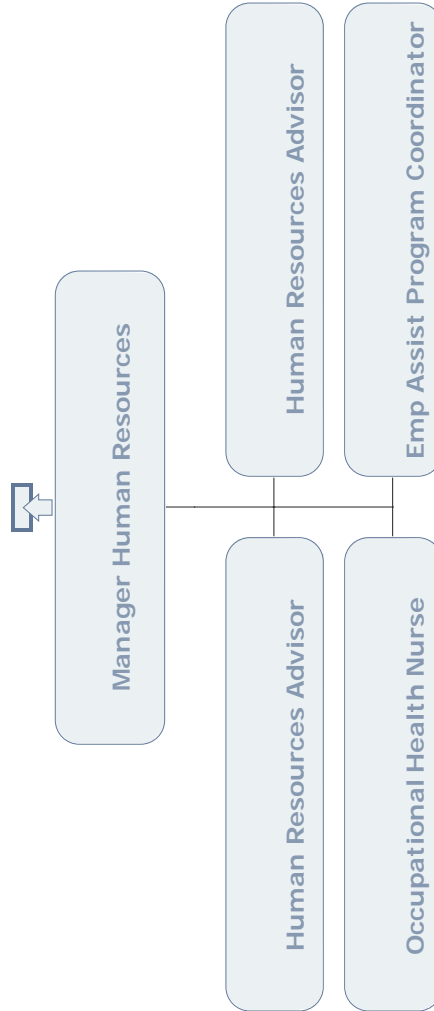


**CORPORATE AFFAIRS, FINANCE & HUMAN RESOURCES  
HUMAN RESOURCES**

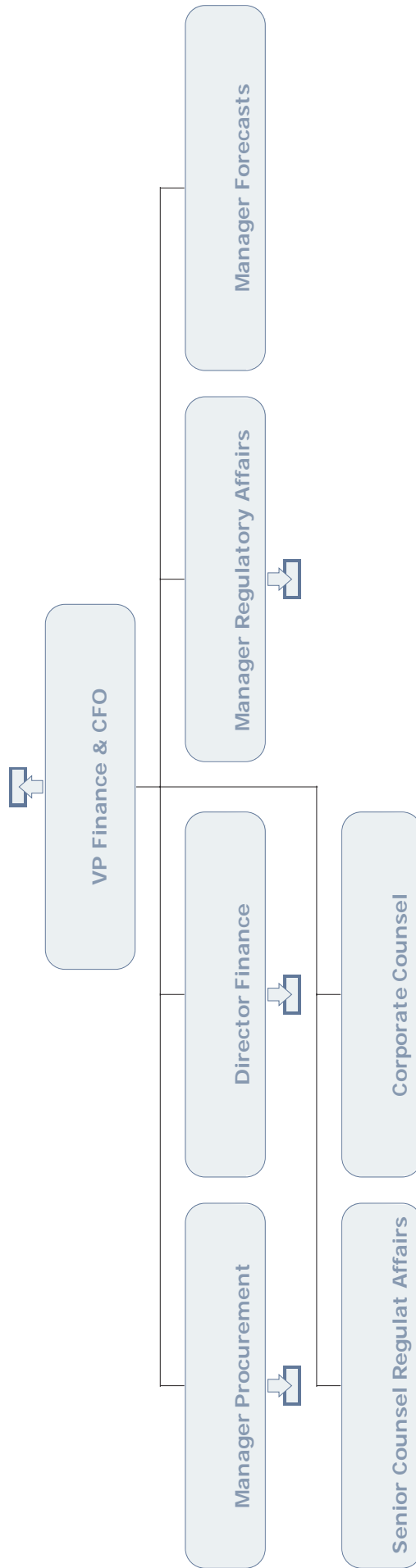


# CORPORATE AFFAIRS, FINANCE & HUMAN RESOURCES

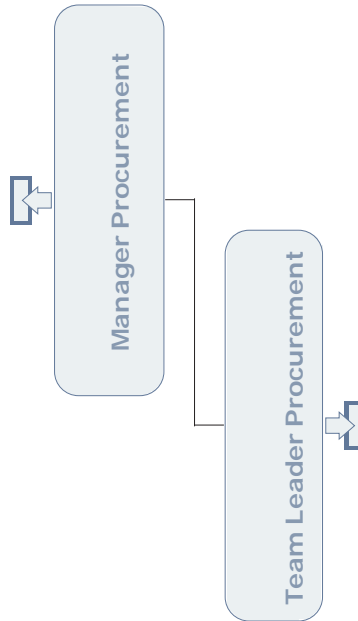
## HUMAN RESOURCES



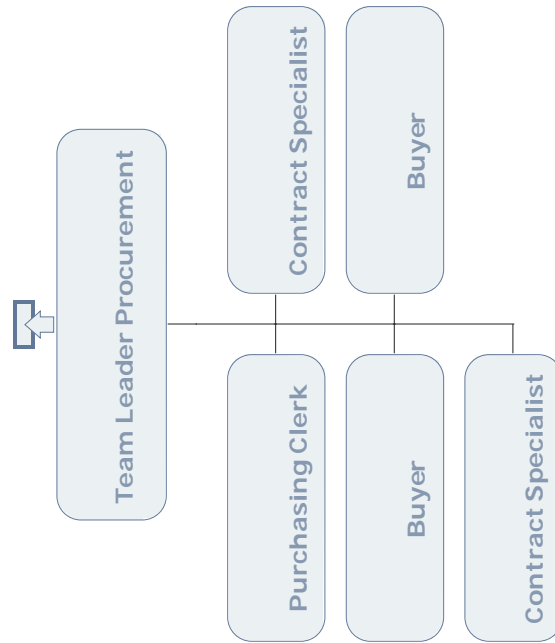
# CORPORATE AFFAIRS, FINANCE & HUMAN RESOURCES FINANCE



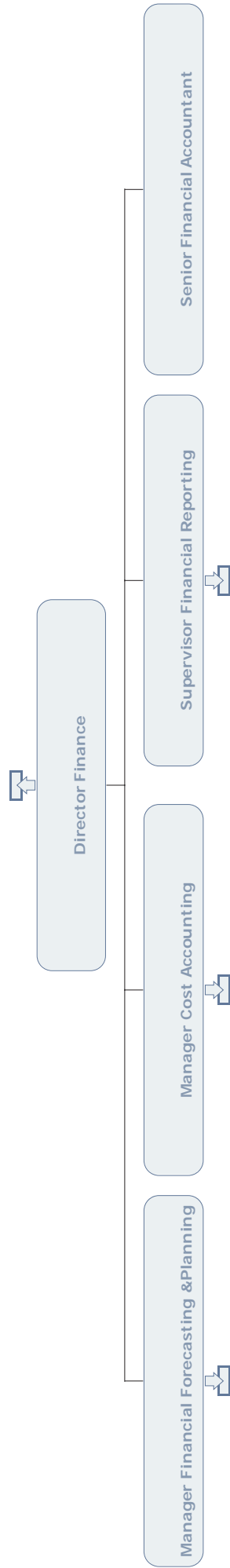
## FINANCE MATERIALS MANAGEMENT



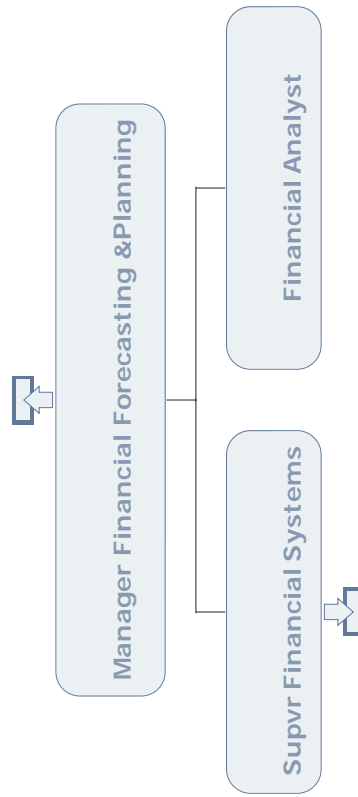
## FINANCE MATERIALS MANAGEMENT



**CORPORATE AFFAIRS, FINANCE & HUMAN RESOURCES  
FINANCE**

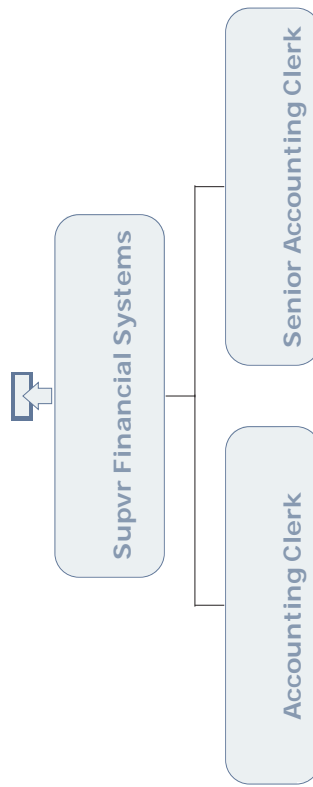


## CORPORATE AFFAIRS, FINANCE & HUMAN RESOURCES FINANCIAL FORECASTING & PLANNING

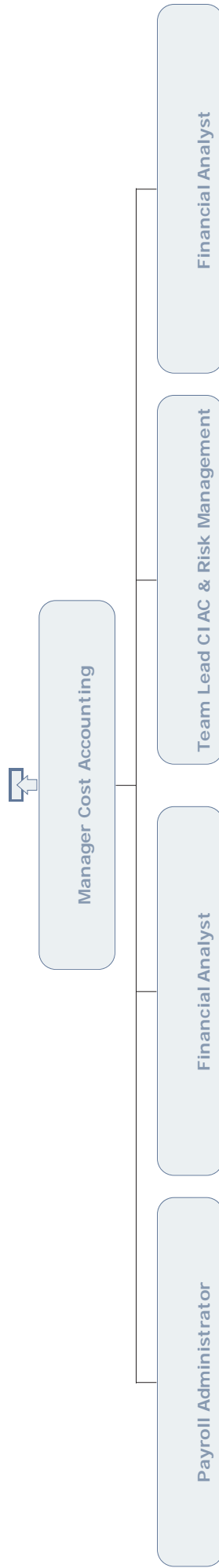




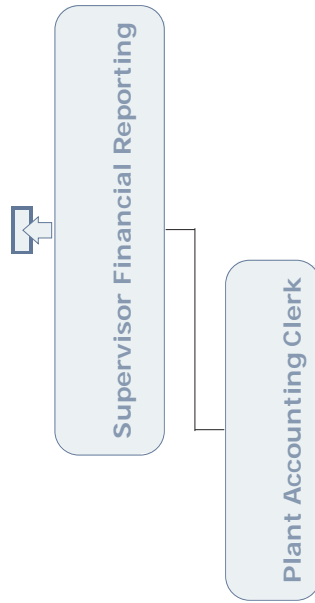
**CORPORATE AFFAIRS, FINANCE & HUMAN RESOURCES  
FINANCIAL SYSTEMS**



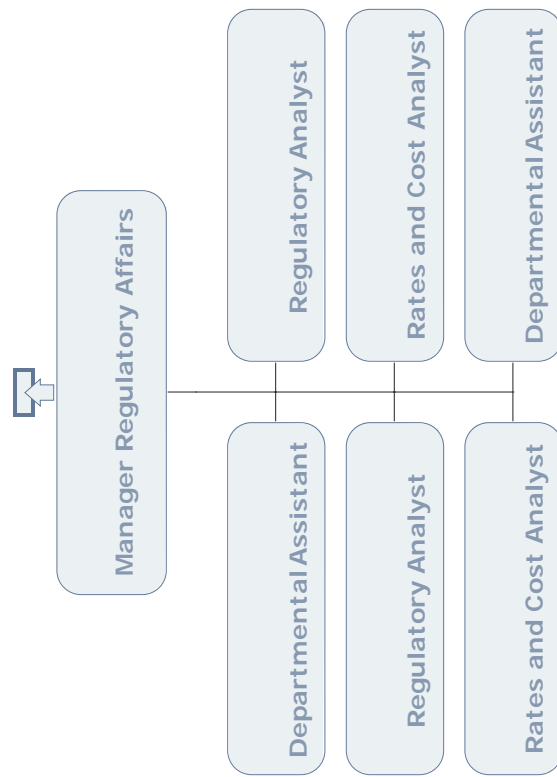
**CORPORATE AFFAIRS, FINANCE & HUMAN RESOURCES  
COST CONTROL**



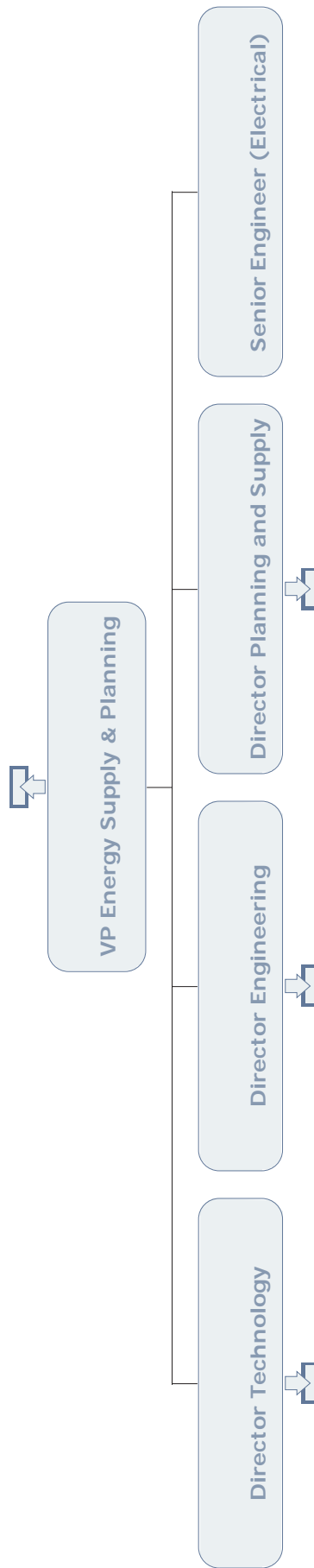
## CORPORATE AFFAIRS, FINANCE & HUMAN RESOURCES FINANCIAL REPORTING



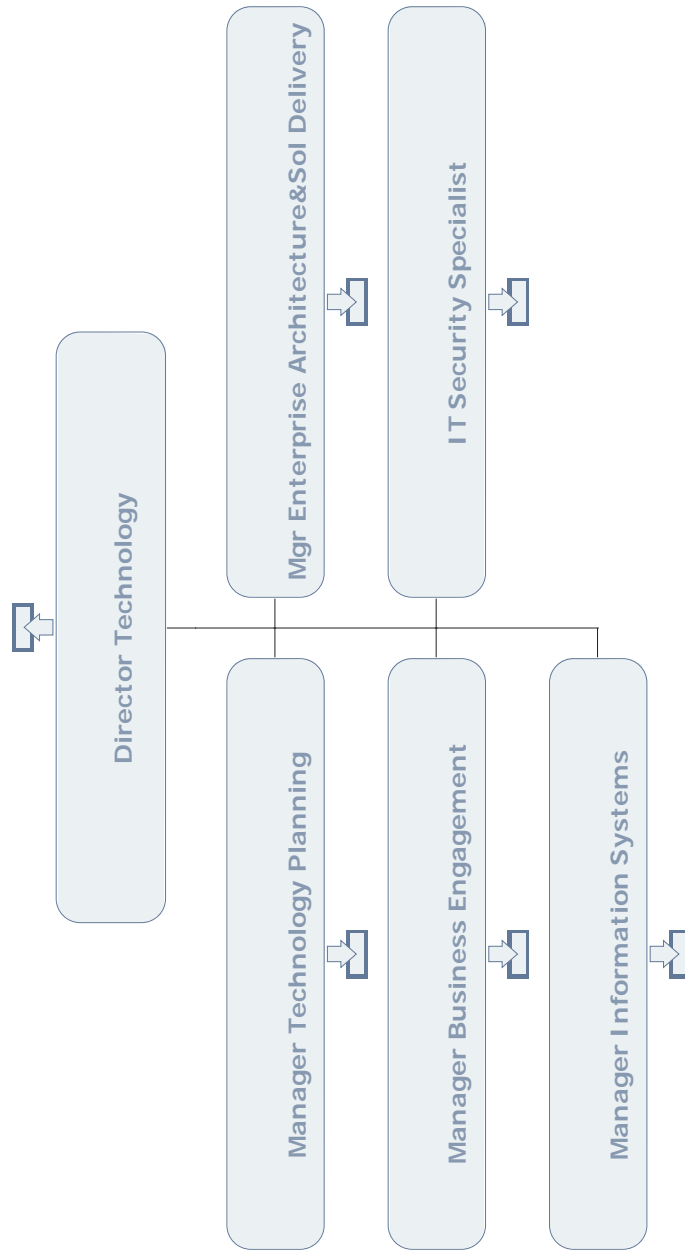
## REGULATION & PLANNING REGULATORY AFFAIRS



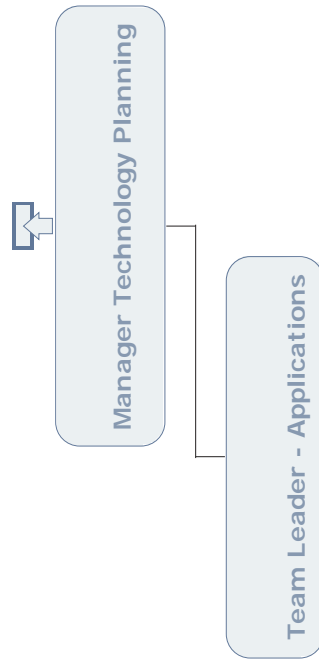
## ENERGY SUPPLY & PLANNING



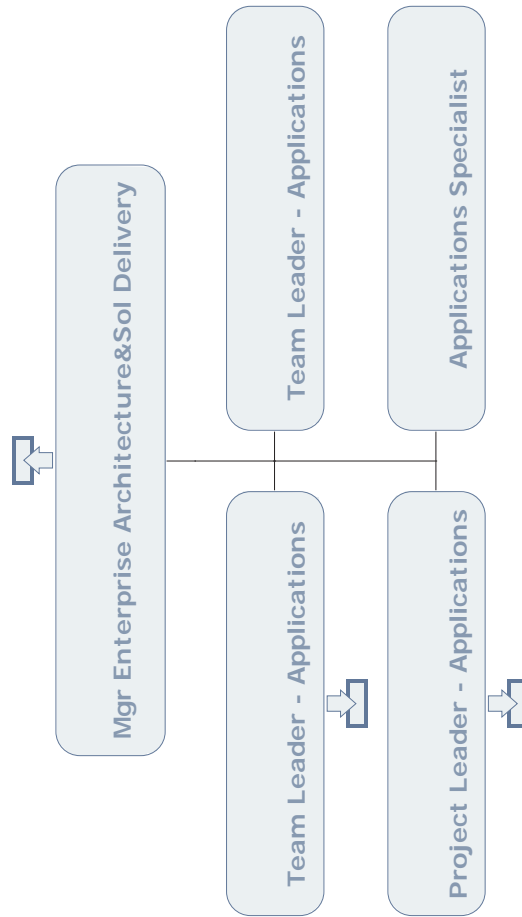
# TECHNOLOGY



# TECHNOLOGY TECHNOLOGY PLANNING

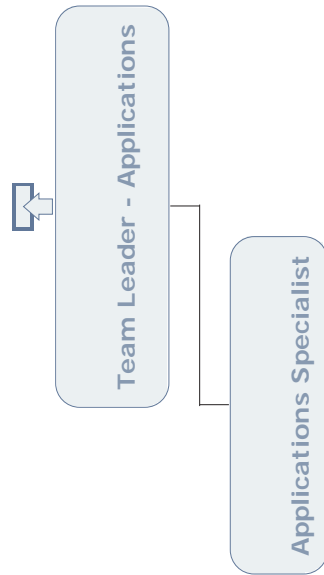


# TECHNOLOGY ENTERPROSE ARCHITECTURE & SOLUTION DELIVERY

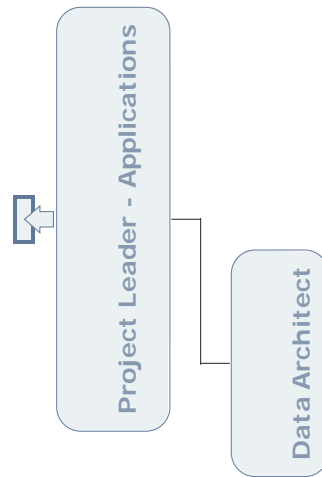




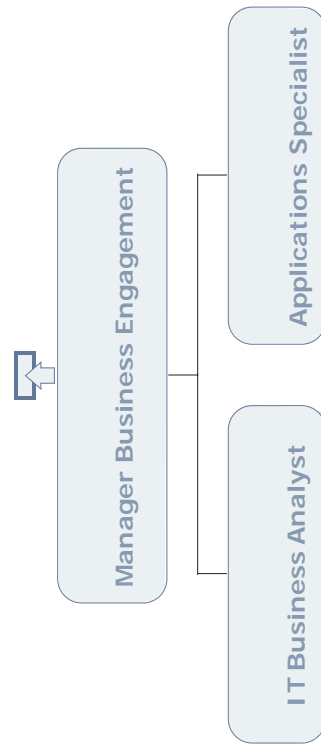
# TECHNOLOGY APPLICATIONS



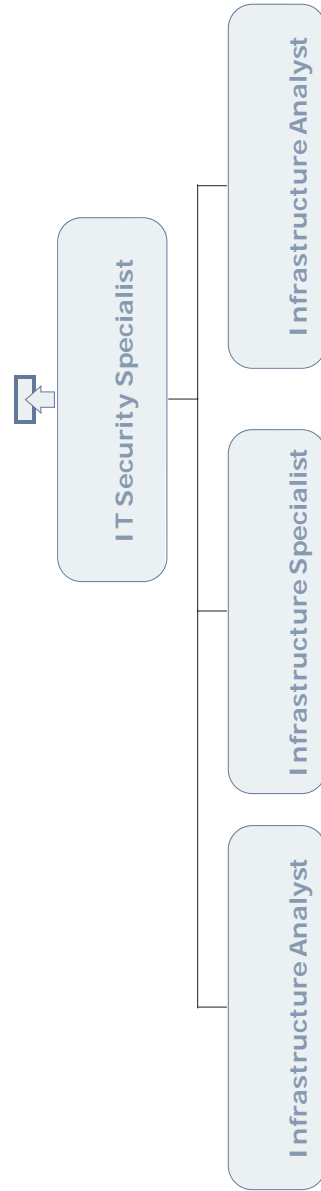
## TECHNOLOGY APPLICATIONS



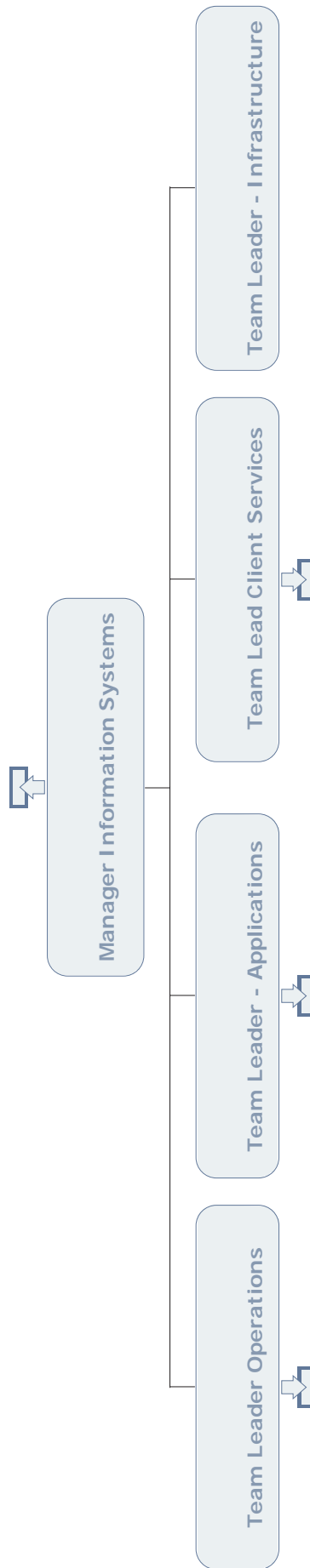
## TECHNOLOGY BUSINESS ENGAGEMENT



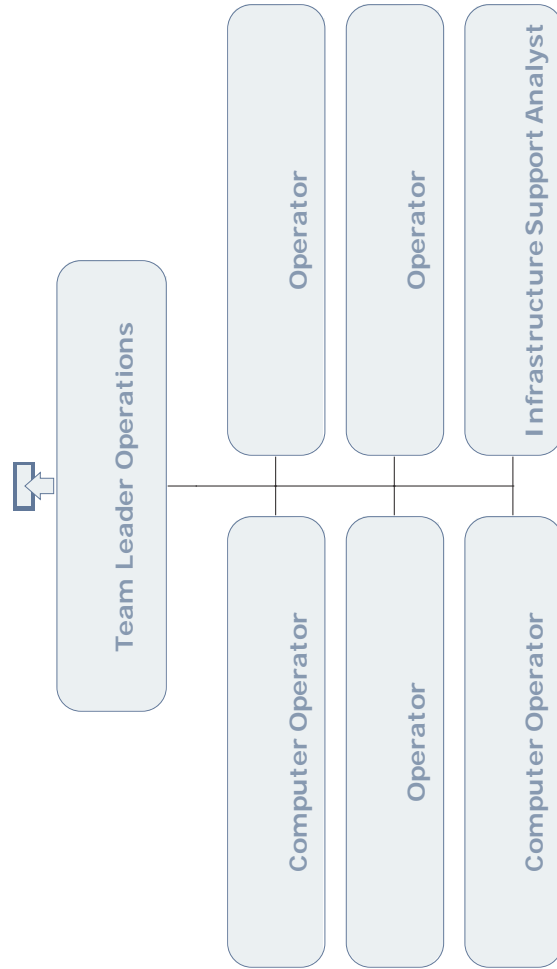
## TECHNOLOGY INFORMATION SYSTEMS - SECURITY



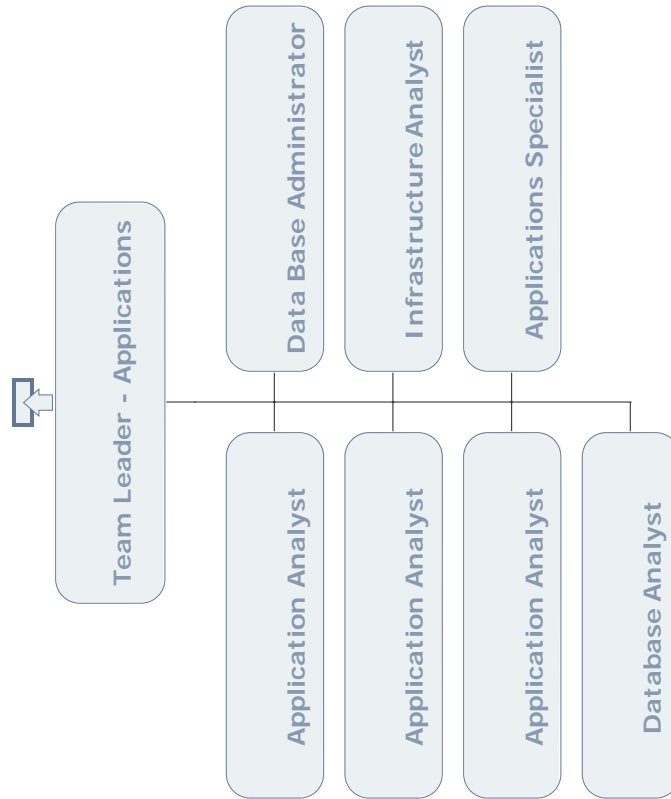
# TECHNOLOGY INFORMATION SYSTEMS



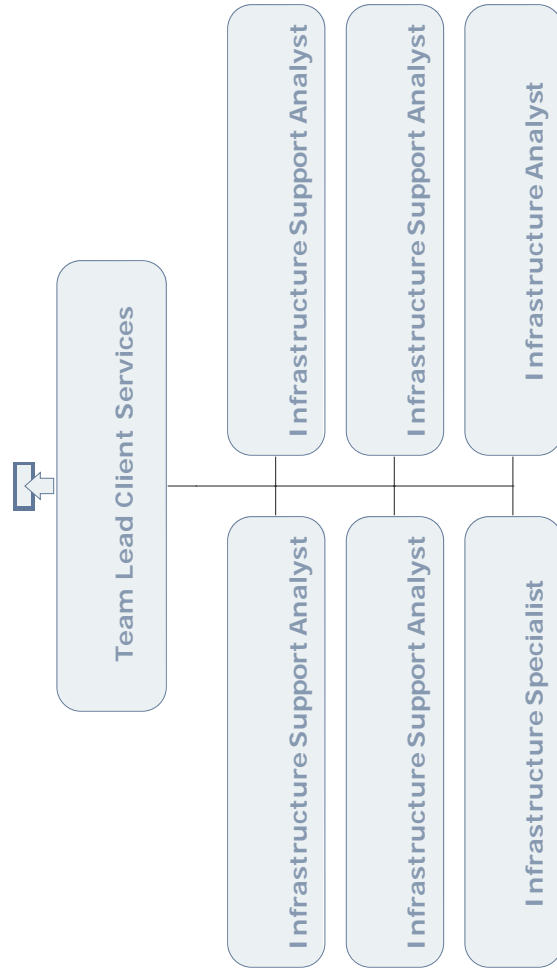
## TECHNOLOGY INFORMATION SYSTEMS - OPERATIONS



# TECHNOLOGY CUSTOMER & OPERATIONS TECHNOLOGY - APPLICATIONS

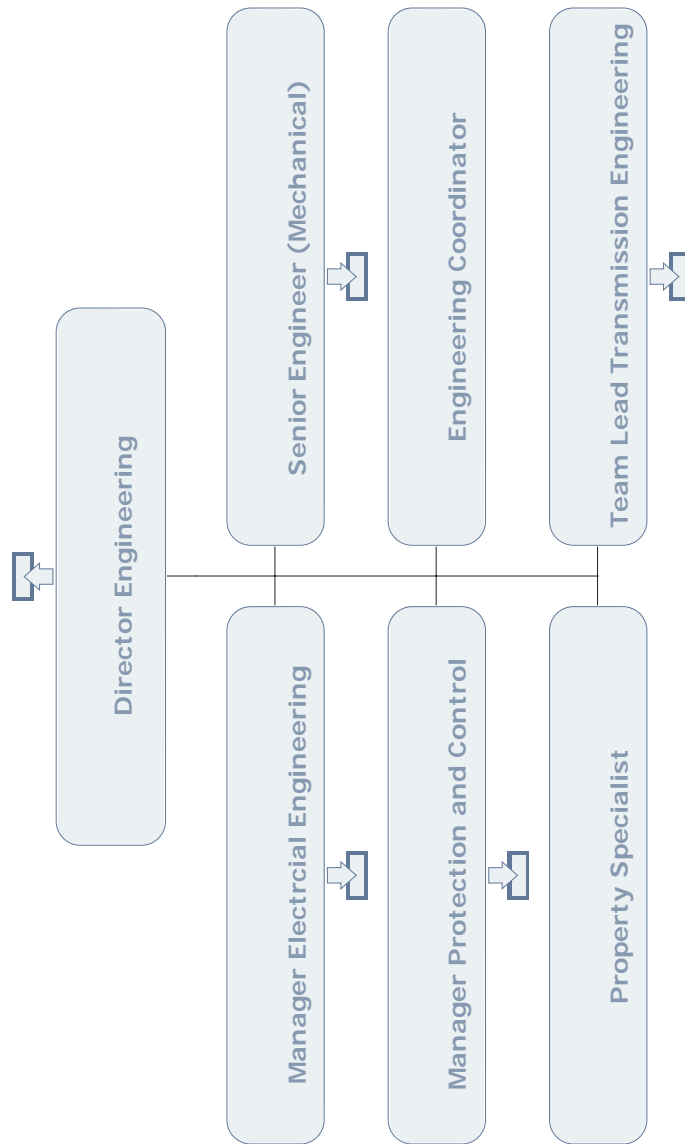


## TECHNOLOGY INFORMATION SYSTEMS - CLIENT SERVICES

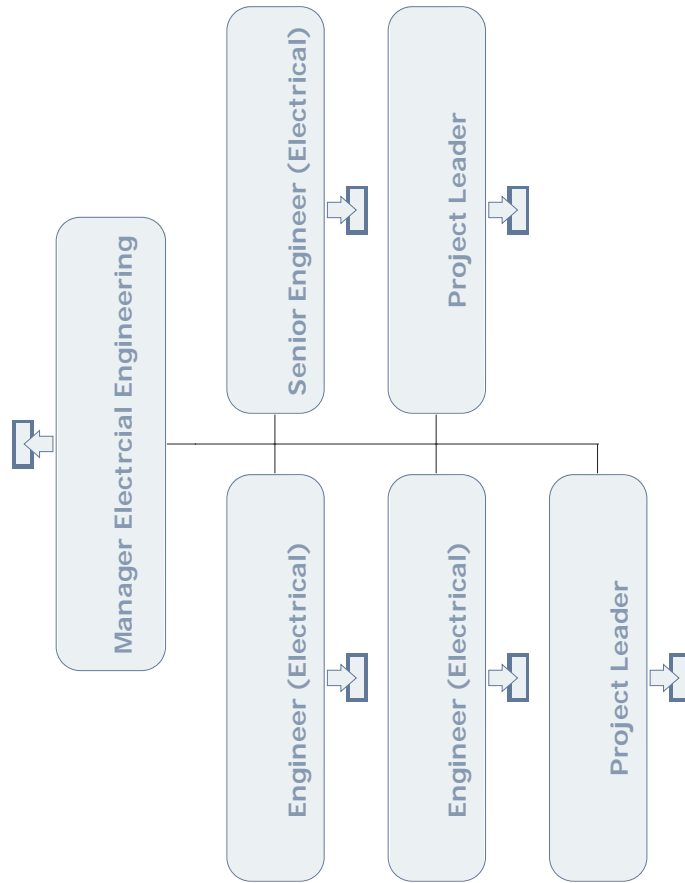




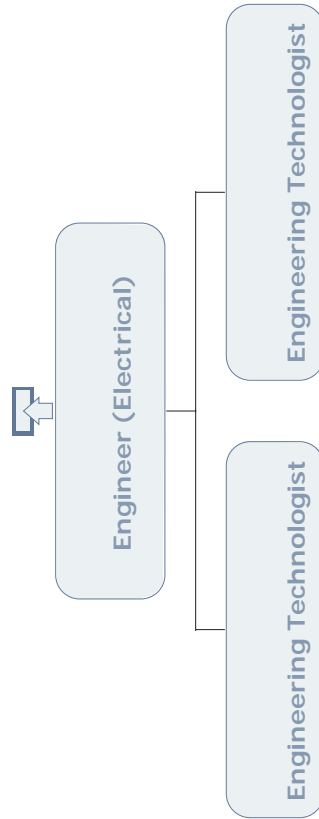
# ENERGY SUPPLY & PLANNING EASTERN ENGINEERING



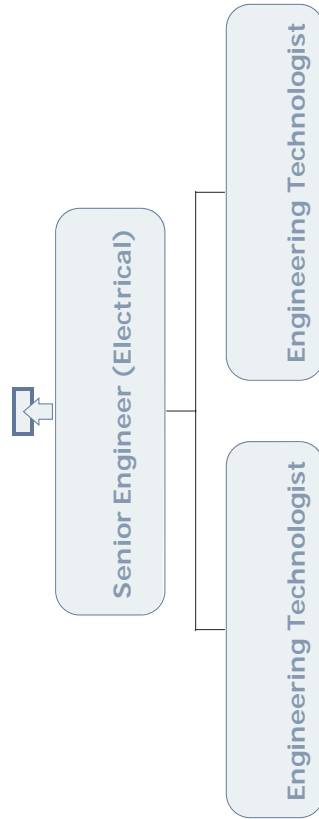
## ENERGY SUPPLY & PLANNING ELECTRICAL PROJECTS



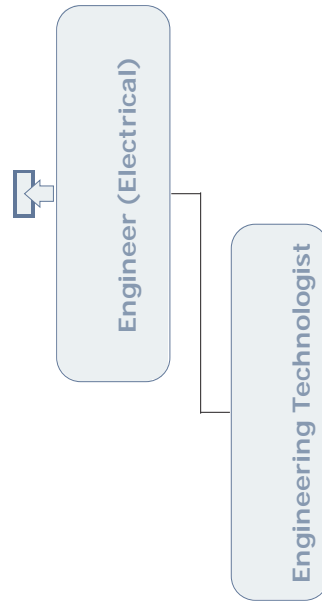
## ENERGY SUPPLY & PLANNING ELECTRICAL ENGINEERING



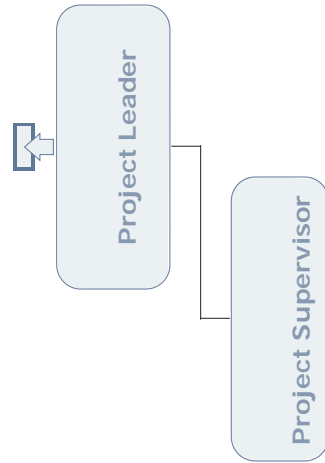
## ENERGY SUPPLY & PLANNING ELECTRICAL ENGINEERING



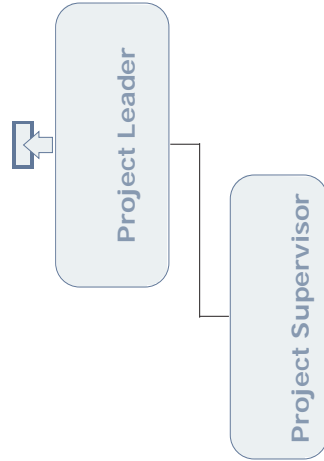
## ENERGY SUPPLY & PLANNING ELECTRICAL ENGINEERING



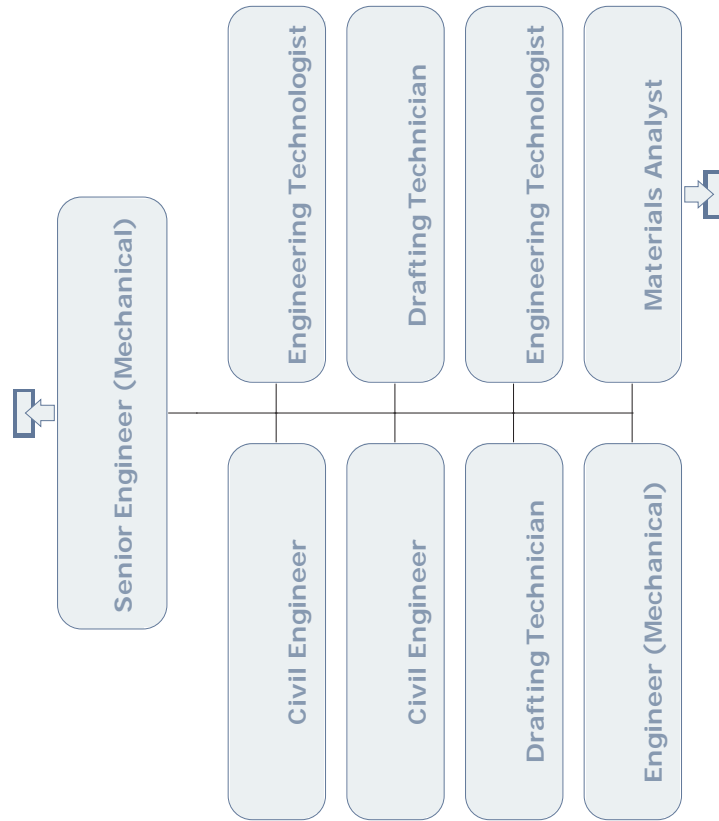
## ENERGY SUPPLY & PLANNING ELECTRICAL PROJECTS



## ENERGY SUPPLY & PLANNING ELECTRICAL PROJECTS

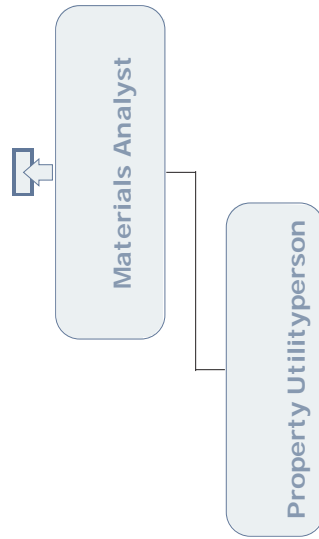


## ENERGY SUPPLY & PLANNING MECHANICAL ENGINEERING

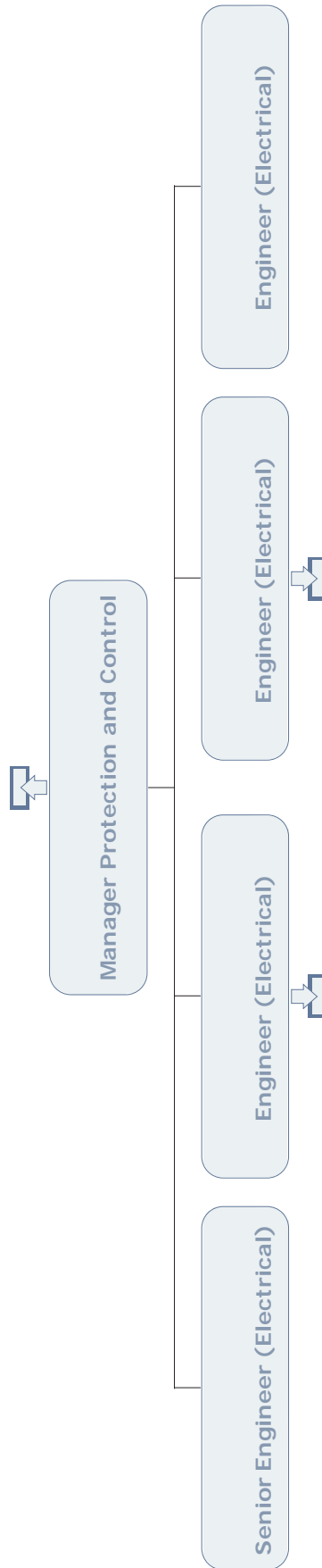




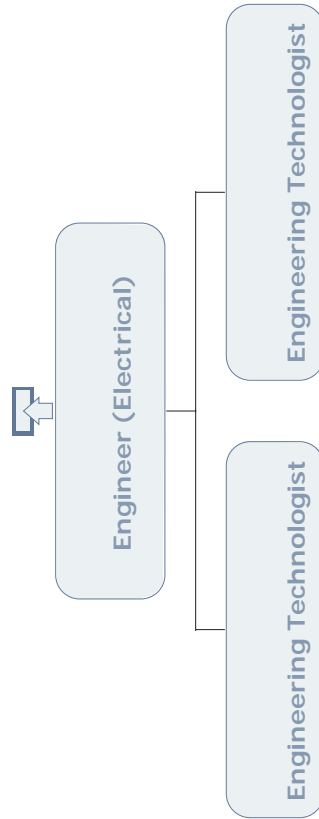
## ENERGY SUPPLY & PLANNING ST. JOHN'S REGIONAL SERVICES



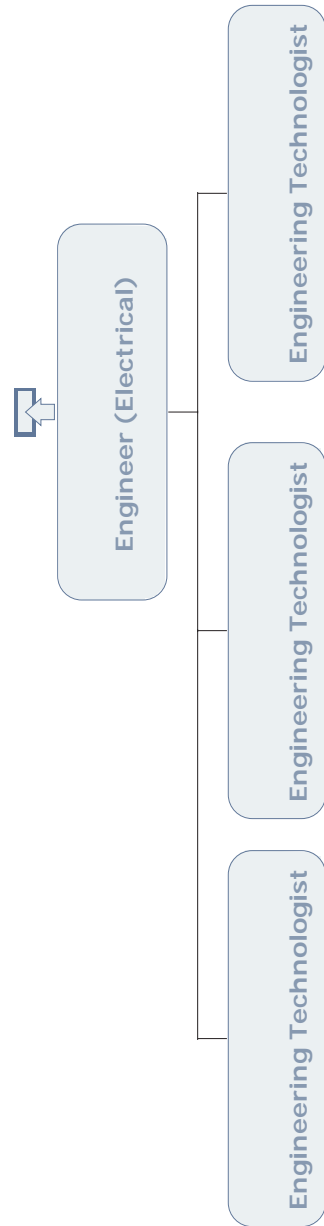
## ENERGY SUPPLY & PLANNING ELECTRICAL ENGINEERING



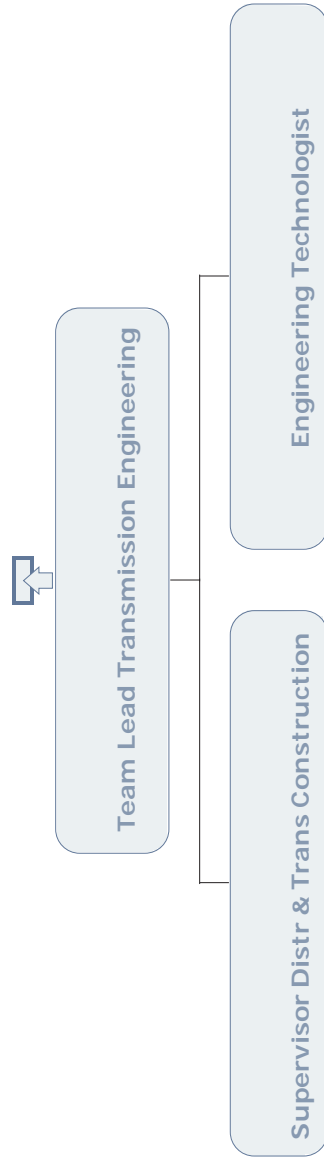
## ENERGY SUPPLY & PLANNING ELECTRICAL ENGINEERING



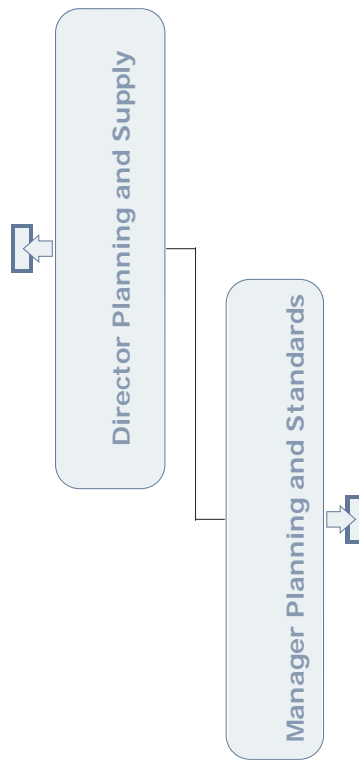
## ENERGY SUPPLY & PLANNING ELECTRICAL ENGINEERING



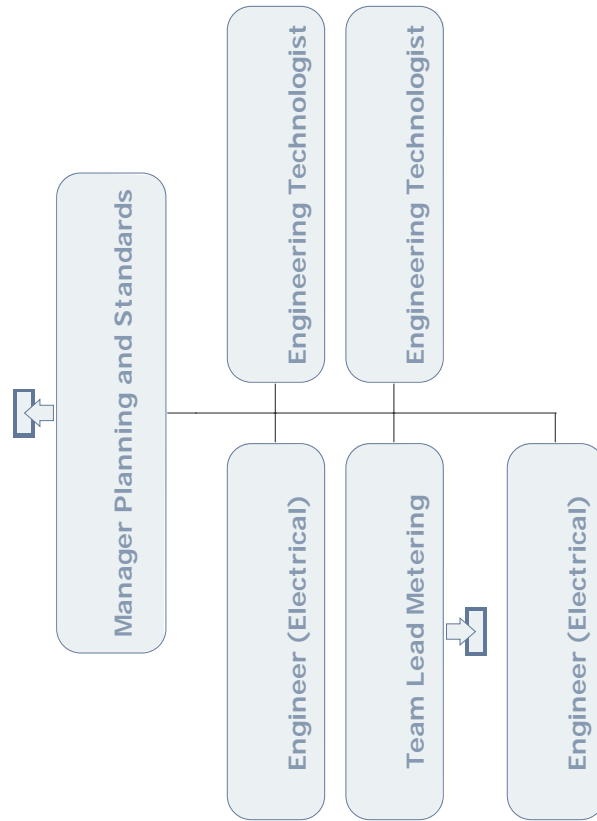
# ENERGY SUPPLY & PLANNING TRANSMISSION ENGINEERING



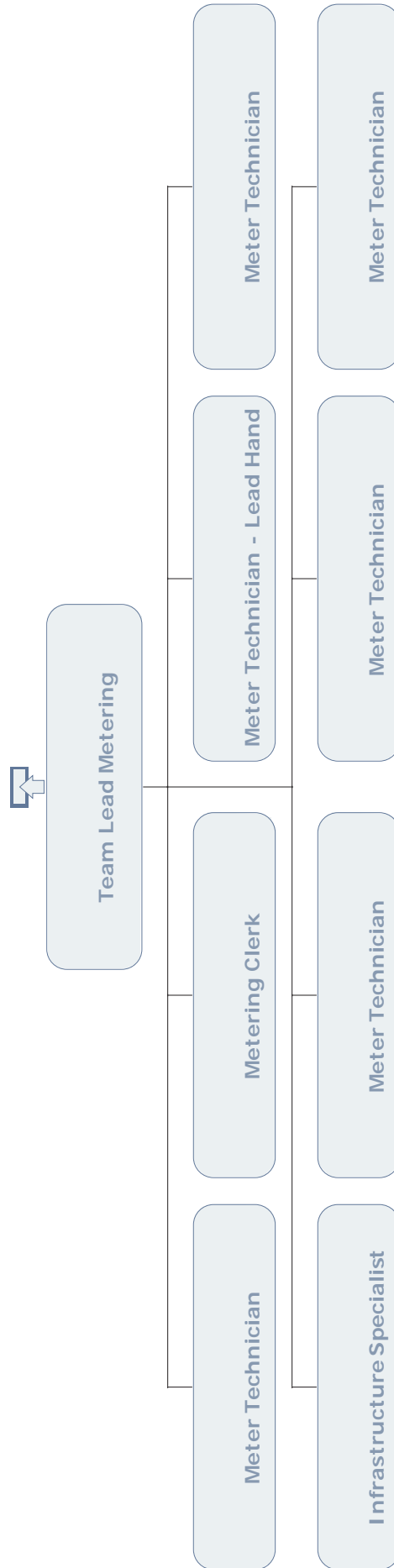
# ENERGY SUPPLY & PLANNING PLANNING & SUPPLY



## ENERGY SUPPLY & PLANNING DISTRIBUTION ENGINEERING & STANDARDS



# ENERGY SUPPLY & PLANNING METERING





## INTERNAL AUDIT

