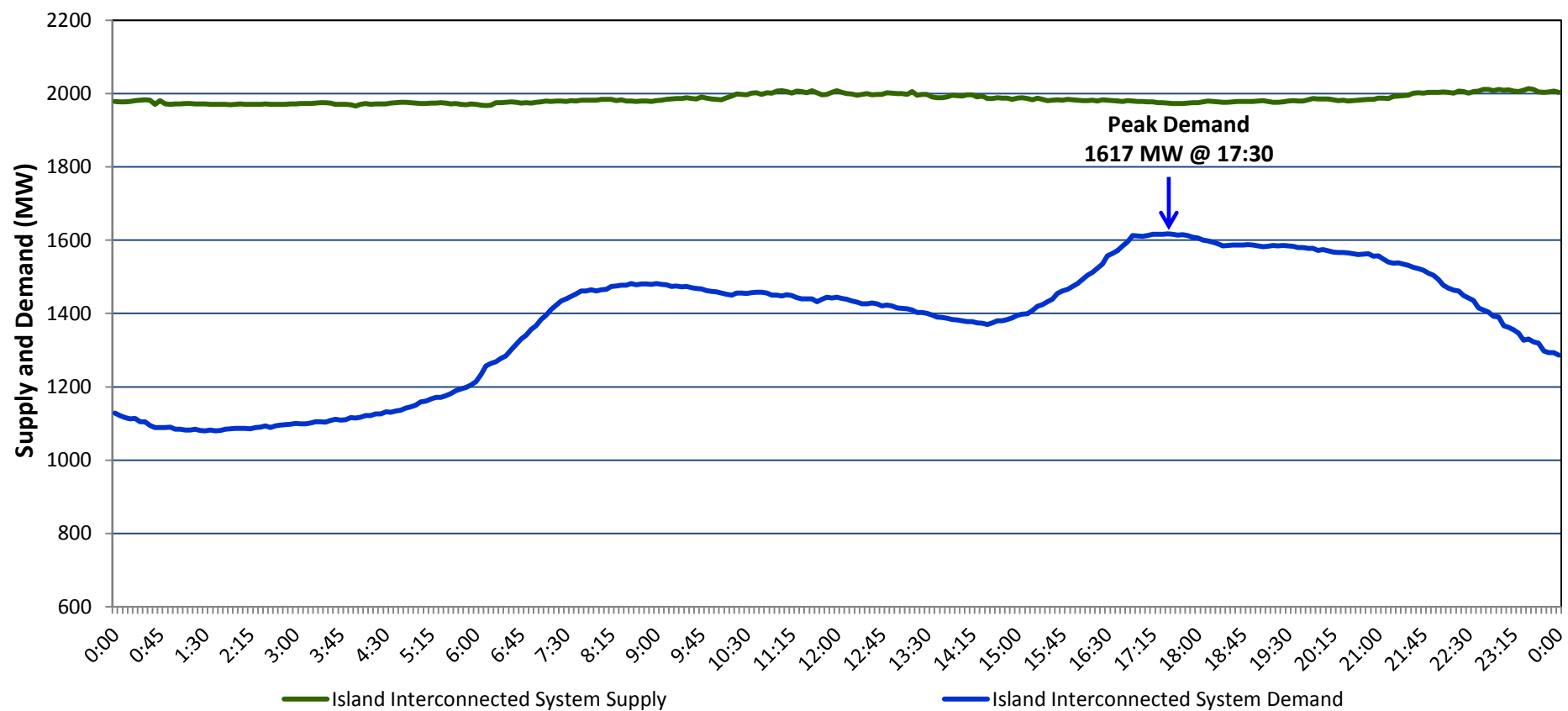


**Newfoundland Labrador Hydro (NLH)
Supply and Demand Status Report Filed Wednesday, January 06, 2016**

**Section 1
Island Interconnected System Supply and Demand
Actual 24 Hour System Performance For Tuesday, January 05, 2016**



Supply Notes For January 05, 2016

- A** As of 1200 hours, November 06, 2015, Nalcor Exploits Grand Falls Unit 7 unavailable. No net impact to the Island Interconnected System.
B As of 1437 hours, December 12, 2015, Holyrood Unit 1 available. Derated to 155 MW (170 MW).

**Section 2
Island Interconnected Supply and Demand**

Wed, Jan 06, 2016	Island System Outlook ³	Seven-Day Forecast	Temperature (°C)		Island System Daily Peak Demand (MW)	
			Morning	Evening	Forecast	Adjusted ⁶
Available Island System Supply: ⁵	1,855 MW	Wednesday, January 06, 2016	-7	-4	1,525	1,427
NLH Generation: ⁴	1,510 MW	Thursday, January 07, 2016	-3	-3	1,465	1,368
NLH Power Purchases:	130 MW	Friday, January 08, 2016	-8	-7	1,555	1,457
Other Island Generation:	215 MW	Saturday, January 09, 2016	-6	-1	1,430	1,333
Current St. John's Temperature:	-10 °C	Sunday, January 10, 2016	-1	-1	1,360	1,264
Current St. John's Windchill:	-15 °C	Monday, January 11, 2016	-1	0	1,395	1,299
7-Day Island Peak Demand Forecast:	1,555 MW	Tuesday, January 12, 2016	3	1	1,320	1,225

Supply Notes For January 06, 2016

- C** At 0428 hours, January 6, 2016, Holyrood Unit 2 unavailable (170 MW).

- Notes: 1. Generation outages for running and corrective maintenance are included. These are not unusual for power system operations. They generally do not impact customer supply. The power system operators schedule outages to system equipment whenever possible to coincide with periods when customer demands are low and sufficient supply reserves are available. However, from time to time equipment outages are necessary and reserves may be impacted.
 2. Due to the Island Interconnected System being isolated from the larger North American grid, when there is a sudden loss of large generating units some customer's load must be interrupted for short periods to bring generation output equal to customer demand. This automatic action of power system protection, referred to as underfrequency load shedding, is necessary to ensure the integrity and reliability of system equipment. Underfrequency events typically occur 5 to 8 times per year on the Island Interconnected System and the resultant customer load interruptions are generally less than 30 minutes.
 3. As of 0800 Hours.
 4. Gross output including station service at Holyrood (24.5 MW) and improved NLH hydraulic output due to water levels (35 MW).
 5. Gross output from all Island sources (including Note 4).
 6. Adjusted for CBP&P interruptible load (when applicable) and the impact of voltage reduction.

**Section 3
Island Peak Demand Information
Previous Day Actual Peak and Current Day Forecast Peak**

Tue, Jan 05, 2016	Actual Island Peak Demand ⁷	17:30	1,617 MW
Wed, Jan 06, 2016	Forecast Island Peak Demand		1,525 MW

- Notes: 7. Island Demand is supplied by NLH generation and purchases, plus generation owned and operated by Newfoundland Power and Corner Brook Pulp & Paper (Deer Lake Power, DLP).