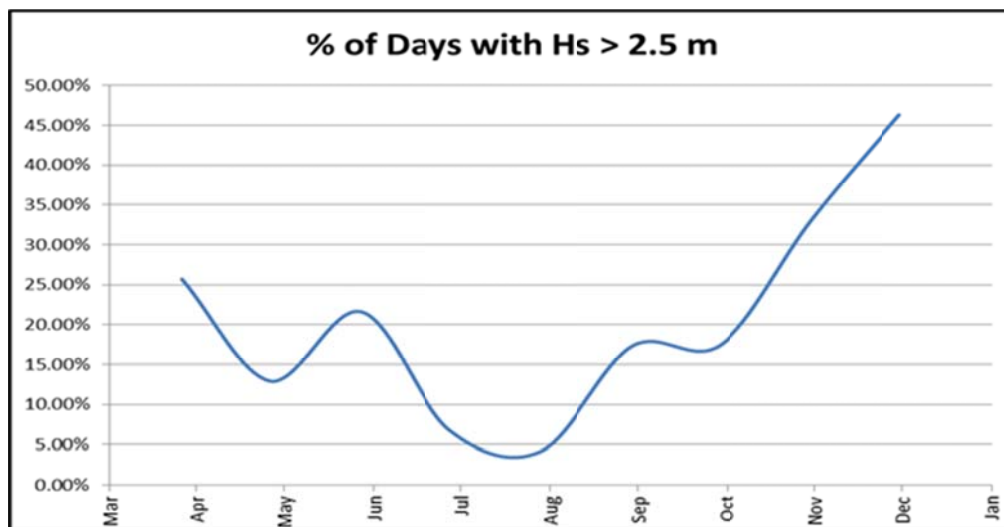


4 Q. Please provide weather surveys for the cable crossing area showing the typical seas
 5 state expressed in max wave heights and when max wave height is less than 3.5
 6 meters for 7 day periods over the calendar year.

8 A. As the cables will be installed at least 70 metres below the water surface or inside
 9 boreholes, surface sea states will not provide adverse impacts to the cable system.

11 Data was not compiled in the requested format. The following chart provides data
 12 for wave heights greater than 2.5 metres:



Month	Apr	May	Jun	Jul	Aug	Sept	Oct	Nov	Dec
% Days	25.7%	12.9%	21.6%	6.8%	4.2%	17.3%	17.5%	33.1%	46.3%
# Days	8	4	6	2	1	5	5	10	14